

# EPOS

## ELECTRIC MACHINERY

### PRODUCT CATALOGUE



**MOGT-ENGINEERING**

[www.mogt-engineering.com](http://www.mogt-engineering.com)



04

Powered By  
**Perkins®**



06

Powered By  
**DEUTZ**



08

**WEICHAI**  
潍柴



10

Powered By  
**FAW**

Powered By  
**KOFO**

12

Powered By  
**LYKAO** **RICARDO**



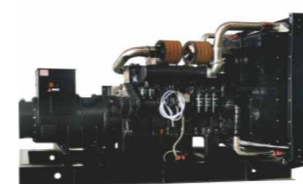
13

Powered By  
**YUCHAI**



14

Powered By  
**SDEC**



16

Powered By  
**YANGDONG**



18

Powered By  
**LOVOL**



19

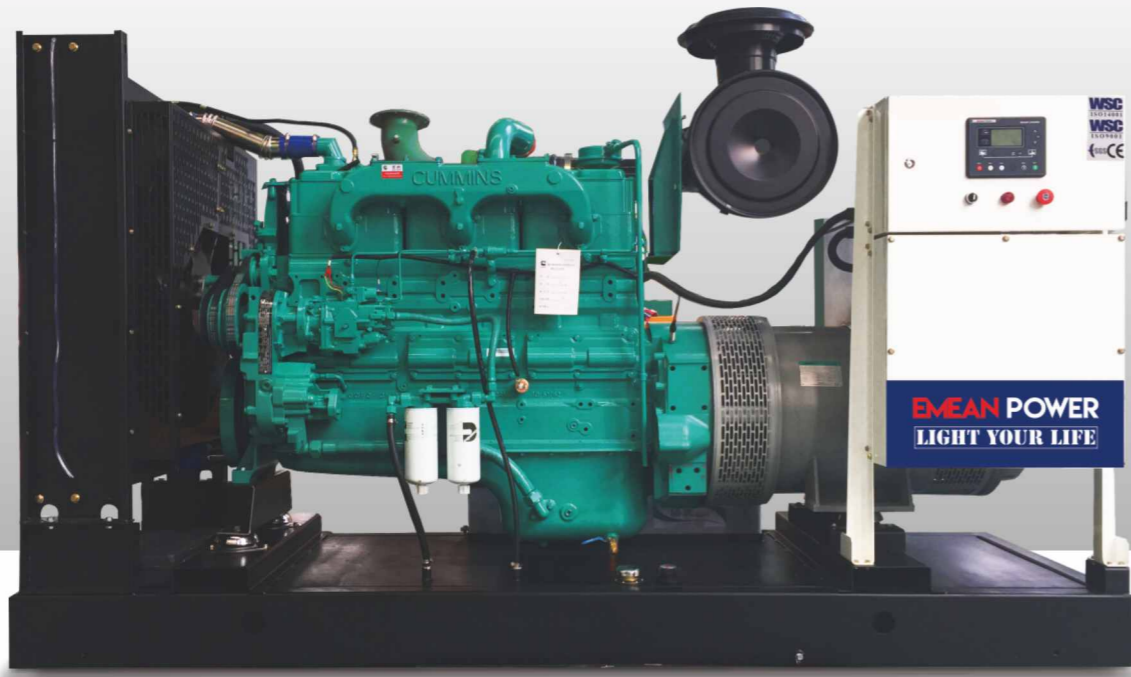
Powered By  
**ISUZU** ----- 20

Powered By  
**VMAN** ----- 20

**GASOLINE GENERATOR** 21

**DIESEL GENERATOR** --- 21

**ALTERNATORS** ----- 22



EM-C28



EM-C45



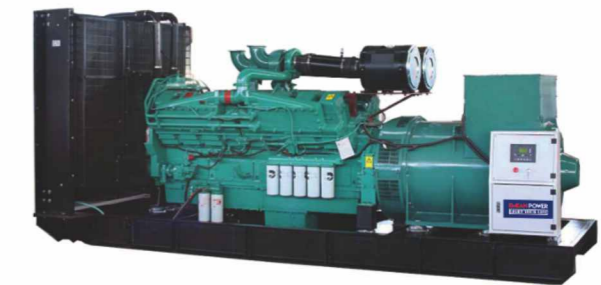
EM-C80



EM-C150



EM-C390



EM-C880

# CUMMINS

DIESEL GENERATOR SETS

Model	Gensets				Technical Data of Diesel Engine					Alternator	Size & Weight			
	Gensets power				Engine model	Engine power	Cylinder	Fuel consumption	Displacement		Open Type Size	Weight	Silent Type Size	Weight
	Prime	Standby	kw	kVA										
VG-C28	20	25	22	28	4B3.9-G1	24	4	7.1	3.9	VG-184FS	1700*750*1100	650	2100*1000*1350	960
VG-C33	24	30	26	33	4B3.9-G2	24	4	6.7	3.9	VG-184G	1700*750*1100	650	2050*950*1380	970
VG-C41	30	38	33	41	4BT3.9-G1	36	4	10	3.9	VG-184H	1820*760*1150	700	2150*1000*1350	980
VG-C44	32	40	35	44	4BT3.9-G2	36	4	9.3	3.9	VG-224C	1820*760*1150	750	2150*1000*1350	990
VG-C55	40	50	44	55	4BTA3.9-G2	50	4	14.9	3.9	VG-224D	1950*830*1150	750	2300*1050*1350	1130
VG-C66	48	60	53	66	4BTA3.9-G2	50	4	14.9	3.9	VG-224E	1950*830*1250	830	2300*1050*1350	1150
VG-C69	50	63	55	69	4BTA3.9-G2	58	4	14.9	3.9	VG-224E	1950*830*1250	850	2300*1050*1350	1150
VG-C83	60	75	66	83	4BTA3.9-G11	70	4	17.6	3.9	VG-224F	2150*830*1250	920	2300*1050*1350	1220
VG-C110	80	100	88	110	6BT5.9-G1	86	6	21.7	5.9	VG-274C	2150*880*1400	1020	2700*1080*1430	1452
VG-C110	80	100	88	110	6BT5.9-G2	92	6	22.3	5.9	VG-274C	2150*880*1400	1000	2700*1080*1430	1430
VG-C138	100	125	110	138	6BTA5.9-G2	110	6	27	5.9	VG-274DS	2350*950*1360	1135	2800*1080*1450	1650
VG-C154	112	140	123	154	6BTA5.9-G2	120	6	30	5.9	VG-274E	2350*950*1360	1200	2900*1100*1550	1700
VG-C165	120	150	132	165	6BTA5.9-G12	140	6	34	5.9	VG-274FS	2470*950*1430	1250	2900*1080*1650	1756
VG-C206	150	188	165	206	6CTA8.3-G1	163	6	42	8.3	VG-274G	2470*950*1430	1250	2900*1080*1650	1780
VG-C220	160	200	176	220	6CTAA8.3-G2	183	6	45	8.3	VG-274H	2600*980*1450	1300	3300*1150*1800	1850
VG-C248	180	225	198	248	6LTA8.9-G2	220	6	53	8.9	VG-274J	2600*1000*1450	1350	3300*1150*2000	1900
VG-C275	200	250	220	275	6LTA8.9-G2	220	6	53	8.9	VG-274K	2650*1050*1700	1400	3400*1150*2000	1980
VG-C275	200	250	220	275	6LTA8.9-G3	230	6	54	8.9	VG-274K	2650*1050*1700	1400	3400*1150*2000	2000
VG-C275	200	250	220	275	MTA11-G2A	234	6	53	10.8	VG-274K	2650*1050*1700	1400	3400*1150*2000	2000
VG-C330	240	300	264	330	NTA855-G1A	264	6	61.3	14	VG-C4D	3000*1100*1800	2500	3800*1250*2000	3300
VG-C358	260	325	286	358	NTA855-G1B	284	6	70.16	14	VG-C4ES	3000*1100*1800	2750	3800*1250*2000	3400

Model	Gensets				Technical Data of Diesel Engine					Alternator	Size & Weight			
	Gensets power				Engine model	Engine power	Cylinder	Fuel consumption	Displacement		Open Type Size	Weight	Silent Type Size	Weight
	Prime	Standby	kw	kVA										
VG-C358	260	325	286	358	MTAA11-G3	282	6	62.37	10.8	VG-C4ES	3000*1100*1800	2500	3800*1250*2000	3200
VG-C385	280	350	308	385	NTA855-G2A	313	6	77.33	14	VG-C4E	3000*1100*1800	2790	3800*1250*2000	3500
VG-C385	280	350	308	385	NTA855-G4	317	6	75.3	14	VG-C4E	3000*1100*1800	2790	3800*1250*2000	3500
VG-C413	300	375	330	413	NTAA855-G7A	370	6	89.2	14	VG-C4FS	3020*1100*1850	2825	3900*1270*2200	3600
VG-C454	330	413	363	454	NTAA855-G7A	370	6	89.2	14	VG-C4F	3020*1100*1850	2915	3900*1270*2200	3600
VG-C495	360	450	396	495	KTA19-G3	403	6	97	18.9	VG-C5C	3400*1200*1900	3600	4200*1400*2200	4200
VG-C550	400	500	440	550	KTA19-G3A	448	6	106.99	18.9	VG-C5D	3400*1300*1950	4350	4500*1400*2200	5200
VG-C605	440	550	484	605	KTA19-G5	470	6	112.25	18.9	VG-C5ES	3510*1300*2000	4350	4500*1400*2200	5200
VG-C660	480	600	528	660	KTA19-G8	523	6	126.75	18.9	VG-C5E	3510*1300*2000	4350	4500*1400*2200	5200
VG-C688	500	625	550	688	KTAA19-G6A	550	6	134.75	18.9	VG-C5FS	3510*1300*2000	4350	4500*1400*2200	5200
VG-C729	530	663	583	729	QSK19-G4	575	6	139.11	19	VG-C5F	3500*1300*2000	4600	4500*1400*2200	5500
VG-C825	600	750	660	825	KTA38-G1	634	12	160.38	37.8	VG-LV6B	4500*1800*2300	6800	5500*2000*2550	8000
VG-C825	600	750	660	825	KTA38-G2	664	12	166.39	37.8	VG-LV6B	4500*1800*2300	7000	5500*2000*2550	8800
VG-C880	640	800	704	880	KTA38-G2B	711	12	178.17	37.8	VG-LV6C	4500*1800*2300	7300	5500*2000*2550	9000
VG-C1004	730	913	803	1004	KTA38-G2A	813	12	203.73	37.8	VG-LV6D	4500*1800*2300	7450	5500*2000*2550	9300
VG-C1100	800	1000	880	1100	KTA38-G5	880	12	220.52	37.8	VG-LV6E	4650*2010*2320	7600	5800*2140*3080	9500
VG-C1238	900	1125	990	1238	KTA38-G9	990	12	248.08	37.8	VG-LV6F	5600*2010*2320	8500	6800*2250*3080	10500
VG-C1375	1000	1250	1100	1375	KTA50-G3	1097	16	271.02	50.3	VG-LV6G	5800*2010*2500	8500	6800*2250*3200	10500
VG-C1540	1120	1400	1232	1540	KTA50-G8	1200	16	303.53	50.3	VG-P7B	5800*2010*2500	9000	6800*2250*3200	11000
VG-C1650	1200	1500	1320	1650	KTA50-GS8	1287	16	308.88	50.3	VG-P7C	5800*2010*2500	9000	6800*2250*3200	11000



EM-P50



EM-P88



EM-P110



EM-P150



EM-P275



EM-P550

# PERKINS

DIESEL GENERATOR SETS

Model	Gensets				Technical Data of Diesel Engine					Alternator	Size & Weight			
	Gensets power				Engine model	Engine power kw	Cylinder No.	Fuel consumption L/h	Displacement (L)		Open Type Size (mm)	Weight (KG)	Silent Type Size (mm)	Weight (KG)
	Prime kw	Standby kVA	Prime kVA	Standby kw										
VG-P10	7	9	7.7	10	403A-11G1	8	3	3.2	1.131	VG-164B	1300*650*1130	420	1672*823*1150	670
VG-P10	7	9	7.7	10	403D-11G	8	3	2.6	1.131	VG-164B	1300*650*1130	420	1672*823*1150	670
VG-P14	10	12.5	11	14	403D-15G	12	3	3.6	1.496	VG-164C	1420*650*1205	510	1760*850*1200	680
VG-P14	10	12.5	11	14	403A-15G1	12	3	3.7	1.496	VG-164C	1550*650*1250	510	1760*850*1200	680
VG-P16	12	15	13.2	16.5	403A-15G2	13	3	5	1.496	VG-184D	1550*650*1250	520	1760*850*1200	695
VG-P22	16	20	17.6	22	404A-22G1	18	4	5.3	2.216	VG-184E	1600*650*1250	560	2000*950*1250	796
VG-P22	16	20	17.6	22	404D-22G	18	4	5.3	2.216	VG-184E	1600*650*1250	560	2000*950*1250	796
VG-P28	20	25	22	27.5	404D-22TD	25	4	7.1	2.216	VG-184F	1700*700*1250	600	2000*950*1250	830
VG-P33	24	30	26.4	33	1103A-33G	28	4	7.2	3.3	VG-184G	1800*750*1250	740	2280*1000*1250	999
VG-P50	36	45	40	50	1103A-33TG1	41	4	10.8	3.3	VG-224C	1800*800*1250	820	2280*1000*1250	1064
VG-P66	48	60	53	66	1103A-33TG2	54	4	14.6	3.3	VG-224E	1850*800*1250	870	2500*1000*1250	1179
VG-P69	50	62.5	55	69	1104A-44TG1	58	4	14.8	4.4	VG-224E	1850*800*1250	950	2500*1000*1250	1257
VG-P88	64	80	70	88	1104A-44TG2	72	4	15.66	4.4	VG-224G	2040*810*1250	996	2600*1000*1250	1357
VG-P88	64	80	70	88	1104C-44TAG1	72	4	18.6	4.41	VG-224G	2040*810*1250	1040	2800*1100*1500	1531
VG-P110	80	100	88	110	1104C-44TAG2	90	4	22.6	4.41	VG-274C	2140*810*1250	1092	2800*1100*1500	1561
VG-P150	108	135	119	149	1106A-70TG1	117	6	26.29	7.01	VG-274E	2400*980*1500	1430	3100*1100*1600	1882
VG-P165	120	150	132	165	1106A-70TAG2	130	6	31.64	7.01	VG-274FS	2500*980*1500	1520	3100*1100*1600	1965
VG-P198	144	180	158	198	1106A-70TAG3	157	6	38.22	7.01	VG-274G	2500*980*1500	1610	3200*1100*1600	2059
VG-P220	160	200	176	220	1106A-70TAG4	174	6	42.35	7.01	VG-274H	2550*980*1500	1700	3300*1100*1800	2136
VG-P220	160	200	176	220	1506A-E88TAG1	184	6	44.6	8.8	VG-274H	2600*1100*1700	2040	3900*1600*2200	3370
VG-P250	180	225	198	248	1506A-E88TAG2	205	6	48.6	8.8	VG-274J	2700*1100*1700	2130	3900*1600*2200	3550

Model	Gensets				Technical Data of Diesel Engine					Alternator	Size & Weight			
	Gensets power				Engine model	Engine power kw	Cylinder No.	Fuel consumption L/h	Displacement (L)		Open Type Size (mm)	Weight (KG)	Silent Type Size (mm)	Weight (KG)
	Prime kw	Standby kVA	Prime kVA	Standby kw										
VG-P275	200	250	220	275	1506A-E88TAG3	228	6	56	8.8	VG-274K	2700*1100*1700	2160	3900*1600*2200	3550
VG-P330	240	300	264	330	1506A-E88TAG5	273	6	65	8.8	VG-C4D	2800*1100*1700	2480	4200*1600*2200	3763
VG-P385	280	350	308	385	2206C-E13TAG2	305	6	75	12.5	VG-C5E	3450*1100*1800	3220	4200*1600*2200	4533
VG-P440	320	400	352	440	2206C-E13TAG3	349	6	85	12.5	VG-C4F	3450*1100*1800	3365	4200*1600*2200	4663
VG-P495	360	450	396	495	2506C-E15TAG1	396	6	99	15	VG-C5C	3450*1100*1900	3780	4500*1800*2200	5076
VG-P550	400	500	440	550	2506C-E15TAG2	435	6	106	15	VG-C5D	3450*1100*1900	3950	4500*1800*2200	5236
VG-P660	480	600	528	660	2806C-E18TAG1A	522	6	129	18.1	VG-C5E	3550*1200*1900	4150	4800*1800*2200	6000
VG-P715	520	650	572	715	2806C-E18TAG2	565	6	132	18.1	VG-C5F	3650*1200*1900	4250	4800*1800*2200	6135
VG-P825	600	750	660	825	4006-23TAG2A	632	6	155	22.921	VG-LV6B	4100*1600*2200	5350	5400*2200*2550	8310
VG-P880	640	800	704	880	4006-23TAG3A	679	6	172	22.921	VG-LV6C	4100*1600*2200	5430	5400*2200*2550	8395
VG-P1100	800	1000	880	1100	4008TAG2A	861	8	215	30.561	VG-LV6E	4580*1600*2200	7150	5800*2200*2550	9800
VG-P1238	900	1125	990	1238	4008-30TAG3	947	8	244	30.5	VG-LV6F	4580*1600*2200	7200	5800*2200*2550	10130
VG-P1375	1000	1250	1100	1375	4012-46TWG2A	1055	12	259	45.842	VG-LV6G	5000*2100*2400	9356	6400*2200*2550	13025
VG-P1485	1080	1350	1188	1485	4012-46TWG3A	1149	12	283	45.842	VG-P17B	5000*2100*2400	9356	6400*2200*2550	13220
VG-P1650	1200	1500	1320	1650	4012-46TAG2A	1267	12	310	45.842	VG-P17C	5200*2100*2400	9634	6400*2200*2550	13388
VG-P1856	1350	1688	1485	1856	4012-46TAG3A	1440	12	370	45.842	VG-P17D	5200*2100*2400	10172	6400*2200*2550	13688
VG-P2035	1480	1850	1628	2035	4016TAG1A	1537	16	370.69	61.123	VG-P17E	5400*2150*2500	12300	7500*2200*2550	16990
VG-P2035	1480	1850	1628	2035	4016-61TRG1	1558	16	374	61.123	VG-P17E	5400*2150*2500	12300	7500*2200*2550	17140
VG-P2200	1600	2000	1760	2200	4016TAG2A	1715	16	400.94	61.123	VG-P17F	5400*2150*2500	12300	7500*2200*2550	17274
VG-P2200	1600	2000	1760	2200	4016-61TRG2	1684	16	422	61.123	VG-P17F	5600*2150*2500	12300	7500*2200*2550	17410
VG-P2475	1800	2250	1980	2475	4016-61TRG3	1875	16	470	61.123	VG-P17G	5600*2150*2500	12700	7500*2200*2550	17624



VG-D50



VG-D176



VG-D220



VG-D550

# DEUTZ

DIESEL GENERATOR SETS

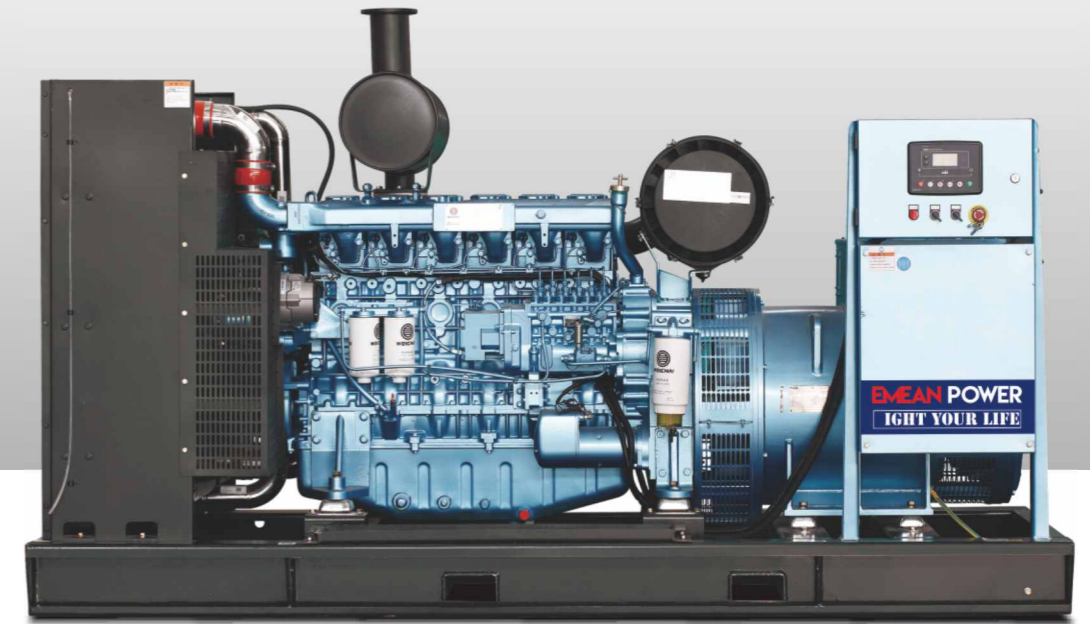
Model	Gensets				Technical Data of Diesel Engine					Alternator	Size & Weight			
	Gensets power				Engine model	Engine power	Cyl	Fuel consumption	Displa-cvGent		Open Type Size	Weight	Silent Type Size	Weight
	Prime	Standby	kw	kVA										
VG-D22	16	20	18	22	BFM3G1	20	4	4.3	3.1	VG-184E	1800*800*1050	600	2050*1000*1150	840
VG-D33	24	30	26	33	BFM3G2	30	4	6.5	3.1	VG-184G	1800*800*1050	700	2050*1000*1150	840
VG-D47	34	43	37	47	BFM3T	40	4	8.8	3.1	VG-224C	1850*800*1050	850	2200*1000*1200	900
VG-D55	40	50	44	55	BFM3C	50	4	10.1	4.7	VG-224D	1950*900*1150	900	2300*1050*1300	950
VG-D69	50	63	55	69	BF4M2012	54	4	12.9	4	VG-224E	1950*900*1150	1000	2300*1050*1300	1200
VG-D83	60	75	66	83	BF4M2012C G1	71	4	15.4	4	VG-224F	2200*900*1350	1300	2700*1080*1430	1350
VG-D83	60	75	66	83	BF4M2012C G2	71	4	15.5	4	VG-274DS	2200*900*1350	1300	2700*1080*1430	1350
VG-D110	80	100	88	110	BF4M1013EC G1	97	4	19.8	7.1	VG-274E	2300*950*1350	1500	2800*1150*1600	1600
VG-D110	80	100	88	110	BF4M1013EC G2	97	4	19.8	7.1	VG-274F	2300*950*1350	1500	2800*1150*1600	1600
VG-D138	100	125	110	138	BF4M1013FC	117	4	25.2	7.1	VG-274G	2550*950*1500	1600	2800*1150*1600	1900
VG-D165	120	150	132	165	BF6M1013EC G1	146	6	29.9	7.1	VG-274H	2550*950*1500	1600	2800*1150*1600	2200
VG-D165	120	150	132	165	BF6M1013EC G2	146	6	29.7	7.1	VG-274J	2550*950*1500	1600	2800*1150*1600	2200
VG-D193	140	175	154	193	BF6M1013FC G2	166	6	34.7	7.1	VG-274K	2700*1100*1500	2000	2900*1200*1600	2400
VG-D220	160	200	176	220	BF6M1013FC G3	183	6	40.4	7.1	VG-C4D	2700*1100*1500	2200	2900*1200*1600	2600
VG-D248	180	225	198	248	BF6M1015-LA GA	208	6	42.7	11.9	VG-C4ES	3300*1100*1800	2200	3800*1250*2000	2900
VG-D275	200	250	220	275	BF6M1015C-LA G1A	228	6	47.4	11.9	VG-C4E	3300*1100*1800	2200	3800*1250*2000	3300
VG-D303	220	275	242	303	BF6M1015C-LA G2A	240	6	52.2	11.9	VG-C4FS	3400*1250*1950	2200	3800*1250*2000	3500
VG-D344	250	313	275	344	BF6M1015C-LA G3A	256	6	59.3	11.9	VG-C5C	3400*1250*1950	2500	3800*1250*2000	3500
VG-D385	280	350	308	385	BF6M1015C-LA G4	310	6	66.4	11.9	VG-C5C	3400*1250*1950	2600	3800*1250*2000	3500
VG-D413	300	375	330	413	BF6M1015C-LA G	328	6	71.1	11.9	VG-C5D	3400*1250*1950	2600	3800*1250*2000	4500
VG-D481	350	438	385	481	BF8M1015CP-LA G1A	388	8	75.9	11.9	VG-C5D	3900*1250*1950	3200	4600*1700*2300	4500

Model	Gensets				Technical Data of Diesel Engine					Alternator	Size & Weight			
	Gensets power				Engine model	Engine power	Cyl	Fuel consumption	Displa-cvGent		Open Type Size	Weight	Silent Type Size	Weight
	Prime	Standby	kw	kVA										
VG-D4995	360	450	396	4995	BF8M1015C-LA G2	403	8	85.4	15.9	VG-C5ES	3900*1250*1950	3200	4600*1700*2300	5000
VG-D523	380	475	418	523	BF8M1015CP-LA G1A	413	8	90.0	15.8	VG-C5ES	3900*1250*1950	3200	4600*1700*2300	5000
VG-D550	400	500	440	550	BF8M1015CP-LA G2	448	8	94.9	15.8	VG-C5E	3900*1250*1950	3200	4600*1700*2300	5000
VG-D619	450	563	495	619	BF8M1015CP-LA G5	500	8	106.0	15.8	VG-C5F	3900*1250*1950	3500	4600*1700*2300	5300
VG-D825	600	750	660	825	HC12V132ZL-LAG2	740	12	209.0	23.8	VG-LV6B	4700*1800*2100	5000	5200*1900*2300	7000
VG-D14F	10	13	11	14	F2L912D	14	4	3.92	1.88	VG-164C	1250*700*1100	506	2000*1100*1250	870
VG-D17F	12	15	13	16	F2L912D	14	4	3.92	1.88	VG-164D	1250*700*1100	521	2000*1100*1250	890
VG-D28F	20	25	22	28	F3L912D	24	4	6.55	2.828	VG-184F	1400*700*1100	578	2200*1100*1250	965
VG-D33F	24	30	27	33	F4L912D	32	4	8.58	3.77	VG-184G	1500*700*1100	626	2280*1100*1250	1080
VG-D40F	30	38	33	41	F4L913D	34	4	9.12	4.086	VG-184H	1500*700*1100	656	2400*1100*1250	1160
VG-D50F	36	45	40	50	F4L912TD	41	4	11	3.77	VG-224C	1600*720*1150	705	2500*1100*1250	1270
VG-D55F	40	50	44	55	F6L912D	48	4	12.88	5.655	VG-224D	1800*750*1200	870	2800*1100*1600	1850
VG-D62F	45	56	50	62	F6L913D	51	4	13.68	6.128	VG-224E	1950*800*1250	940	2800*1100*1600	1960
VG-D70F	50	63	55	69	F6L912TD	61	4	16.36	5.655	VG-224E	2000*800*1300	950	2900*1100*1600	2050
VG-D110F	80	100	88	110	BF6L913	88	4	22.78	6.128	VG-274C	2100*1000*1350	1100	3000*1100*1600	2300
VG-D140F	100	125	110	138	BF6L913C	114	6	29.51	6.128	VG-274D	2250*1050*1400	1175	3100*1100*1600	2490
VG-D176F	128	160	141	176	BF8L513	147	6	37.18	12.763	VG-274F	2400*1150*1500	1600	3400*1400*1800	3100
VG-D220F	160	200	176	220	BF8L513C	176	6	44.52	12.763	VG-274H	2550*1200*1600	1740	3750*1600*2000	3450
VG-D220F	160	200	176	220	F12L413F	176	6	44.93	19.144	VG-274H	2550*1200*1600	2265	3900*1800*2000	4300



**Feature:**

The WEICHAI FACTORY was formally established in 1946. It is one of the first batch of diesel engine manufacturers in China. The company has strong research and development capabilities, in the industrial scale, research and development capacity, engineering development system construction and other aspects of the leading position in the industry. And WEICHAI establish a European research and development center in Austria. In 2005, the company successfully launched the blue engine euro III emission diesel engine with independent intellectual property rights, which has reached the international leading level in terms of noise, fuel consumption and other aspects, and can be comparable with the world's advanced products. On this basis, the independent and the successful development in 2007 countries IV engine emissions standards.



**WEICHAI**  
DIESEL GENERATOR SETS

Model	Gensets				Technical Data of Diesel Engine					Alternator	Size & Weight			
	Gensets power				Engine model	Engine power	Cyl	Fuel consumption	Displa-cVGent		Open Type Size	Weight	Silent Type Size	Weight
	Prime	Standby	kw	kVA										
VG-W22	16	20	18	22	WP2.3D25E200	23	4	6.09	2.289	VG-184E	1700*750*1100	550	1850*950*1100	690
VG-W28	20	25	22	28	WP2.3D33E200	30	4	7.94	2.289	VG-184FS	1700*750*1100	600	1950*950*1100	730
VG-W33	24	30	26	33	WP2.3D33E200	30	4	7.94	2.289	VG-184G	1820*760*1150	620	1950*950*1100	750
VG-W42	30	38	33	41	WP2.3D40E200	36	4	9.53	2.289	VG-184H	1820*760*1150	640	1950*950*1100	790
VG-W50	36	45	40	50	WP2.3D48E200	44	4	11.39	2.3	VG-224C	1950*830*1150	850	2200*860*1200	995
VG-W55	40	50	44	55	WP4.1D66E200	60	4	16.59	4.09	VG-224D	1950*830*1250	850	2200*860*1200	1085
VG-W70	50	63	55	69	WP4.1D66E200	60	4	16.59	4.09	VG-224E	1950*830*1250	900	2350*900*1250	1090
VG-W83	60	75	66	83	WP4.1D80E200	72	4	19.91	4.09	VG-224F	2150*830*1250	950	2400*950*1250	1133
VG-W103	75	94	83	103	WP4.1D100E200	90	4	22.24	4.09	VG-274C	2150*830*1250	1050	2500*1000*1350	1153
VG-W110	80	100	88	110	WP4D100E200	90	4	21.49	4.5	VG-274C	2350*950*1360	1120	2800*1080*1450	1413
VG-W150	108	135	119	149	WP6D132E200	120	6	28.94	6.75	VG-274ES	2350*950*1360	1200	2800*1080*1450	1508
VG-W165	120	150	132	165	WP6D152E200	138	6	33.28	6.75	VG-274FS	2470*950*1430	1235	2900*1100*1500	1670
VG-W206	150	188	165	206	WP10D200E200	182	6	46.04	9.726	VG-274G	2470*950*1430	1582	3000*1100*1700	1970
VG-W250	180	225	198	248	WP10D238E200	216	6	54.64	9.726	VG-274J	2600*980*1450	1930	3000*1100*1700	2435
VG-W275	200	250	220	275	WP10D264E200	240	6	60.71	9.726	VG-274K	3000*1100*1800	2050	3600*1200*2000	2686
VG-W360	260	325	286	358	WP10D320E200	291	6	70.18	9.726	VG-C4ES	3000*1100*1800	2150	3750*1200*2000	2750
VG-W413	300	375	330	413	WP13D385E200	350	6	86.47	12.54	VG-C4FS	3400*1200*1900	2825	3900*1250*2200	3945
VG-W440	320	400	352	440	WP13D405E200	368	6	90.92	12.54	VG-C4F	3400*1300*1950	3600	3900*1250*2200	4200

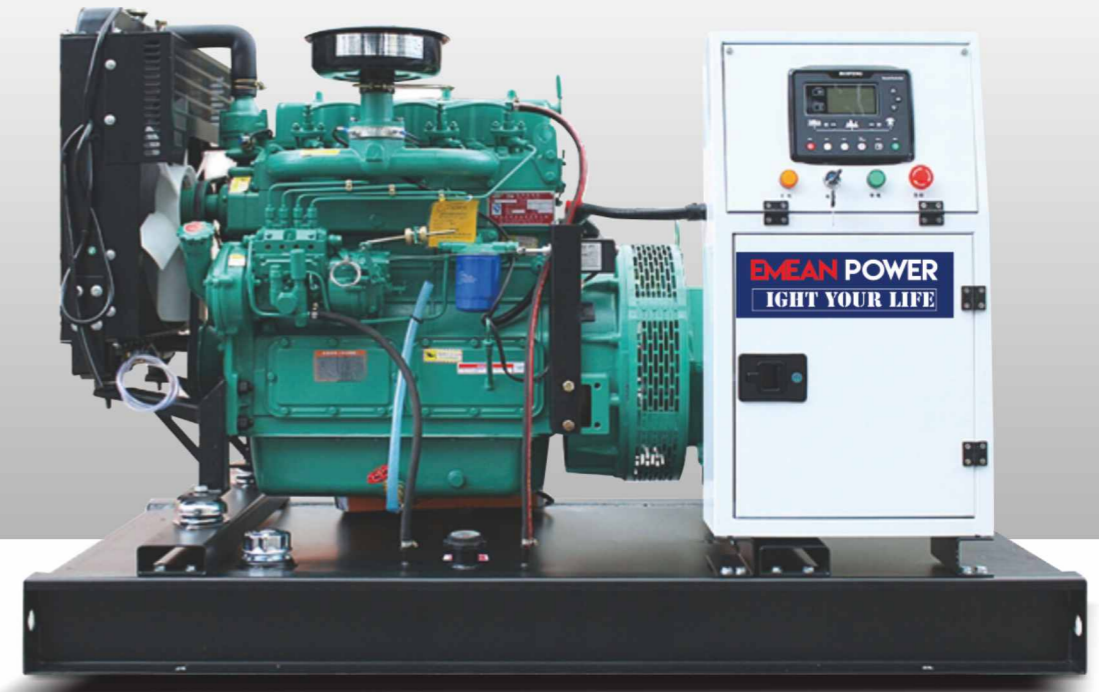
**WEICHAI**  
DIESEL GENERATOR SETS

Model	Gensets				Technical Data of Diesel Engine					Alternator	Size & Weight			
	Gensets power				Engine model	Engine power	Cyl	Fuel consumption	Displa-cVGent		Open Type Size	Weight	Silent Type Size	Weight
	Prime	Standby	kw	kVA										
VG-W495	360	450	396	495	6M26D447E200	406	6	100.31	15.9	VG-C5C	3510*1300*2000	4350	4100*1600*2250	5200
VG-W550	400	500	440	550	WHM6160SD515-5	468	6	112.87	24.12	VG-C5D	3510*1300*2000	4350	4500*1800*2250	5200
VG-W620	450	563	495	619	6M33D572E200	520	6	128.47	19.6	VG-C5E	3510*1300*2000	4350	4500*1800*2250	5500
VG-W688	500	625	550	688	6M33D605E200	550	6	135.88	19.6	VG-C5FS	4500*1800*2300	6800	5200*2200*2550	8000
VG-W825	600	750	660	825	12M26D748E200	680	12	161.42	31.8	VG-LV6B	4500*1800*2300	7000	5200*2200*2550	8800
VG-W880	640	800	704	880	12M26D792E200	720	12	177.88	31.8	VG-LV6C	4500*1800*2300	7300	5200*2200*2550	9000
VG-W990	720	900	792	990	12M26D902E200	820	12	202.59	31.8	VG-LV6D	4650*2010*2320	7450	5400*2200*2550	9300
VG-W1100	800	1000	880	1100	12M26D968E200	880	12	217.4	31.8	VG-LV6E	4650*2010*2320	7600	5800*2250*2550	9500
VG-W1238	900	1125	990	1238	12M33D1108E200	1007	12	248.79	39.2	VG-LV6F	4800*2010*2500	8500	6400*2250*2550	10500
VG-W1375	1000	1250	1100	1375	12M33D1210E200	1108	12	271.76	39.2	VG-LV6G	4800*2010*2500	8500	6400*2250*2550	10500
VG-W1540	1120	1400	1232	1540	16M33D1400E310	1280	16	323.05	52.8	VG-7B	5200*2250*2700	10600	40GP	15000
VG-W1700	1240	1550	1364	1705	16M33D1530E310	1390	16	354.12	52.8	VG-7C	5200*2250*2700	11000	40GP	15000
VG-W1800	1320	1650	1452	1815	16M33D1580E310	1430	16	366.18	52.8	VG-7D	5200*2250*2700	11600	40GP	15000
VG-W2000	1400	1750	1540	1925	16M33D1680E310	1530	16	393.25	52.8	VG-7E	5200*2250*2700	11900	40GP	15000
VG-W2100	1500	1875	1650	2063	12M55D1870E310	1700	12	400.31	52.8	VG-7E	6100*2350*2800	16600	40HQ	20000
VG-W2200	1600	2000	1760	2200	12M55D2020E310	1850	12	439.15	65.2	VG-7F	6100*2350*2800	16900	40HQ	20000
VG-W2500	1800	2250	1980	2475	12M55D2210E310	1985	12	476.64	65.2	VG-7G	6100*2350*2800	17200	40HQ	20000
VG-W2800	2000	2500	2200	2750	12M55D2450E310	2450	12	590.92	88	VG-7H	6100*2350*2800	17500	40HQ	20000

# FAW

## DIESEL GENERATOR SETS

Model	Gensets				Technical Data of Diesel Engine					Alternator	Size & Weight			
	Gensets power				Engine model	Engine power	Cylinder	Fuel consumption	Displacement		Open Type Size	Weight	Silent Type Size	Weight
	Prime	Standby	kw	kVA										
VG-F17	12	15	13	17	4DW81-23D	17	4	3.4	2.3	VG-164D	1500*800*900	500	1750*900*1100	685
VG-F22	16	20	18	22	4DW91-29D	21	4	4.4	2.5	VG-184E	1600*800*900	500	1800*900*1100	700
VG-F28	20	25	22	28	4DW92-35D	26	4	5.5	2.5	VG-184F	1650*800*900	500	1900*900*1100	850
VG-F33	24	30	26	33	4DW92-39D	29	4	6.6	2.5	VG-184G	1650*800*900	630	1900*900*1100	860
VG-F33	24	30	26	33	4DW93-42D	31	4	6.6	2.5	VG-184G	1650*800*900	650	1900*900*1100	860
VG-F39	28	35	31	39	4DX21-45D	33	4	7.3	2.5	VG-184HS	1800*800*950	750	2050*900*1200	930
VG-F44	32	40	35	44	4DX21-53D	38	4	8.6	3.8	VG-224C	1800*800*950	750	2100*900*1200	1030
VG-F44	32	40	35	44	4DX22-50D	37	4	8.4	3.8	VG-224C	1800*800*950	750	2100*900*1200	1030
VG-F55	40	50	44	55	4DX22-65D	48	4	10.5	3.8	VG-224E	1800*800*950	800	2100*900*1200	1050
VG-F55	40	50	44	55	4DX22-65D	48	4	10.2	3.8	VG-224D	1800*800*950	800	2100*900*1200	1050
VG-F69	50	63	55	69	4DX23-78D	57	6	12.8	3.8	VG-224E	1900*900*1050	876	2300*1000*1200	1160
VG-F69	50	63	55	69	4110/125Z-09D	65	6	12.8	4.7	VG-224E	1900*900*1050	880	2300*1000*1200	1160
VG-F103	75	94	83	103	CA4F2-12D	80	6	18.3	4.7	VG-274C	2200*950*1200	950	2700*1080*1400	1300
VG-F110	80	100	88	110	CA6DF2D-14D	96	6	19.2	6.5	VG-274C	2200*950*1200	1000	2800*1100*1500	1500
VG-F138	100	125	110	138	CA6DF2-17D	125	6	24.0	7.1	VG-274D	2350*950*1350	1100	3000*1100*1500	1650
VG-F165	120	150	132	165	CA6DF2-19D	140	6	28.6	7.1	VG-274F	2350*950*1350	1250	3000*1100*1500	1800
VG-F220	160	200	176	220	CA6DL1-24D	176	6	37.1	7.7	VG-274H	2500*950*1500	1450	3100*1100*1700	1950
VG-F248	180	225	198	248	CA6DL2-27D	205	6	41.8	8.6	VG-274J	2500*950*1500	1900	3100*1100*1700	2500
VG-F275	200	250	220	275	CA6DL2-30D	227	6	46.4	8.6	VG-274K	2500*950*1500	2200	3100*1100*1700	3000
VG-F330	240	300	264	330	CA6DM2J-39D	287	6	54.0	11	VG-C4D	3100*1050*1700	2500	3700*1200*1900	3500
VG-F358	260	325	286	358	CA6DM2J-41D	300	6	60.4	11	VG-C4ES	3100*1050*1700	2500	3700*1200*1900	3600
VG-F413	300	375	330	413	CA6DN1-45D	332	6	68.2	12.5	VG-C4FS	3300*1100*1900	2500	4000*1200*2100	3600



# KOFO

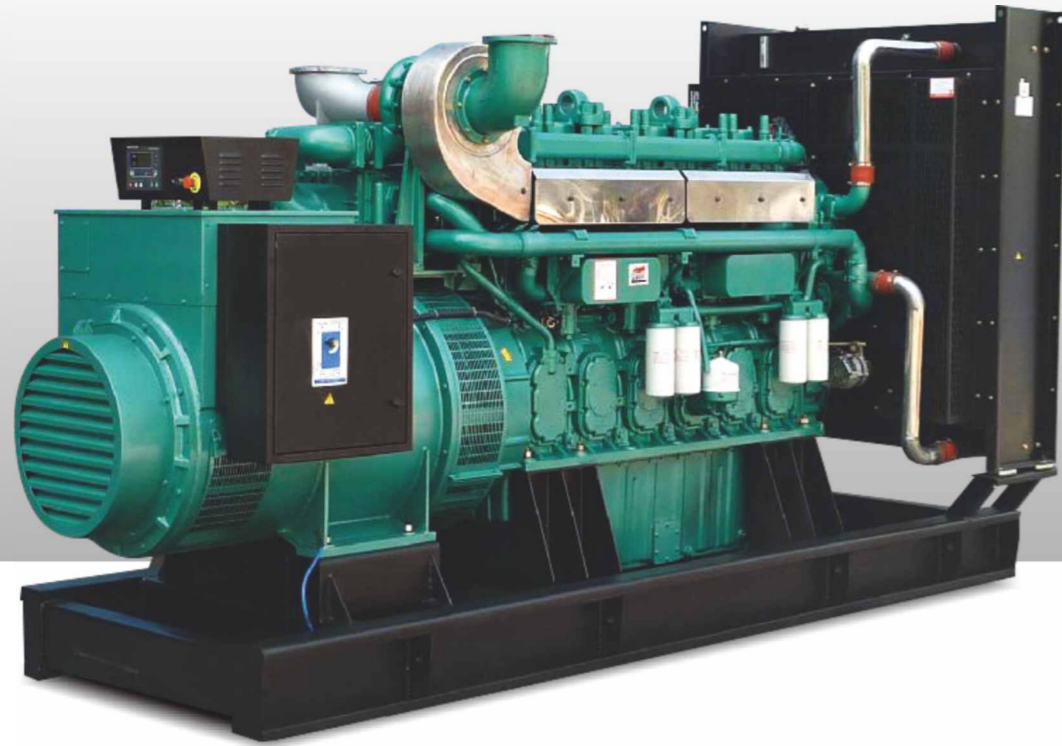
## DIESEL GENERATOR SETS

Model	Gensets				Technical Data of Diesel Engine					Alternator	Size & Weight			
	Gensets power				Engine model	Engine power	Cylinder	Fuel consumption	Displacement		Open Type Size	Weight	Silent Type Size	Weight
	Prime	Standby	kw	kVA										
VG-K14	10	13	11	14	Y480BD	14	4	3.3	1.8	VG-164C	1200*700*1100	590	1700*900*1150	650
VG-K17	12	15	13	17	Y485BD	17	4	3.9	1.8	VG-164D	1200*700*1100	600	1700*900*1150	660
VG-K21	15	19	17	21	K4100DS	30	4	4.7	3.6	VG-184ES	1500*700*1100	735	2000*850*1150	815
VG-K25	18	23	20	25	K4100DS	30	4	5.7	3.6	VG-184ES	1500*700*1100	765	2000*850*1150	880
VG-K30	22	28	24	30	K4100DS	30	4	6.9	3.6	VG-184F	1600*700*1100	800	2000*850*1150	900
VG-K33	24	30	26	33	K4100DS	30	4	7.5	3.8	VG-184G	1600*700*1100	820	2000*850*1150	940
VG-K36	26	33	29	36	K4102D	36	4	7.9	3.8	VG-184G	1600*700*1100	820	2000*850*1150	950
VG-K41	30	38	33	41	N4105DS	38	4	9.1	3.8	VG-184H	1600*700*1100	880	2000*850*1150	980
VG-K55	40	50	44	55	R4105DS	42	4	12.5	3.8	VG-224D	1750*800*1130	940	2150*920*1200	1050
VG-K55	40	50	44	55	R4105ZDS	56	4	12.5	3.8	VG-224D	1750*800*1130	940	2150*920*1200	1050
VG-K69	50	63	55	69	R4105ZDS	56	4	14.2	3.8	VG-224E	1950*820*1220	980	2350*950*1250	1160
VG-K69	50	63	55	69	R4105ZLDS	66	4	14.2	3.8	VG-224E	1950*820*1220	980	2350*950*1250	1160
VG-K80	58	73	64	80	R4105ZLDS	66	4	16.0	4.3	VG-224F	2000*850*1250	1080	2400*950*1230	1250
VG-K80	58	73	64	80	R4105BZLDS	74	4	16.0	4.3	VG-224F	2000*850*1250	1080	2400*950*1230	1250
VG-K94	68	85	75	94	R4105BZLDS	74	4	19.0	5.0	VG-224G	2000*850*1300	1080	2400*950*1230	1250
VG-K94	68	85	75	94	R6105ZDS	84	6	19.0	5.0	VG-224G	2000*850*1300	1080	2400*950*1230	1250
VG-K103	75	94	83	103	R6105ZDS	84	6	20.6	6.5	VG-274CS	2000*850*1300	1160	2500*1000*1350	1300
VG-K103	75	94	83	103	R6105ZLDS	100	6	20.6	6.5	VG-274CS	2000*850*1300	1200	2500*1000*1350	1400
VG-K110	80	100	88	110	R6105ZLDS	100	6	22.0	7.0	VG-274C	2230*950*1380	1300	2800*1080*1450	1500
VG-K138	100	125	110	138	R6105AZLDS	121	6	26.0	7.0	VG-274DS	2300*950*1380	1360	2800*1080*1450	1580
VG-K165	120	150	132	165	R6105BZLDS	132	6	31.1	7.0	VG-274FS	2400*950*1430	1400	2900*1050*1500	1620
VG-K206	150	188	165	206	R6110ZLDS	170	6	38.9	7.0	VG-274G	2500*950*1480	1450	2900*1050*1500	1700
VG-K220	160	200	176	220	6126-68DE	187	6	41.5	7.0	VG-274H	2500*950*1480	1580	3000*1100*1700	1800
VG-K248	180	225	198	248	6126-42DE	231	6	42.4	7.0	VG-274J	2850*1020*1600	1670	3000*1100*1700	1900
VG-K275	200	250	220	275	6126A-260DE	260	6	47.1	7.0	VG-274K	3000*1050*1800	2300	3600*1200*1950	2700
	300	375	330	413	WT12D-308E	308	6	56.6	7.8	VG-444D	3000*1050*1800	3000	3900*1400*2100	3500

# RICARDO

## DIESEL GENERATOR SETS

Model	Gensets				Technical Data of Diesel Engine					Alternator	Size & Weight			
	Gensets power				Engine model	Engine power	Cylinder	Fuel consumption	Displacement		Open Type Size	Weight	Silent Type Size	Weight
	Prime	Standby	kw	kVA										
GFS-12	10	12.5	11	14	ZH2015D	18	2	5.5	1.81	164C	1200*700*1100	490	1700*900*1150	550
GFS-15	12	15	13	17	ZH2015D	18	2	5.5	1.81	164D	1200*700*1100	500	1700*900*1150	560
GFS-19	15	19	17	21	K4100D	30	4	9.0	3.61	184ES	1500*700*1100	635	2000*850*1150	715
GFS-22	18	22.5	20	25	K4100D	30	4	9.0	3.61	184E	1500*700*1100	665	2000*850*1150	780
GFS-25	20	25	22	28	K4100D	30	4	9.0	3.61	184FS	1600*700*1100	700	2000*850*1150	800
GFS-27	22	27.5	24	30	K4100D	30	4	9.0	3.61	184F	1600*700*1100	720	2000*850*1150	810
GFS-30	24	30	26	33	K4100D	30	4	9.0	3.61	184F	1600*700*1100	720	2000*850*1150	820
GFS-33	26	33	29	36	K4102D	36	4	11.1	3.76	184G	1600*800*1100	760	2000*850*1150	830
GFS-40	32	40	35.2	44	K4100ZD	40	4	11.6	3.76	144H	1650*700*1100	770	2100*850*1150	870
GFS-50	40	50	44	55	ZH4105ZD	50	4	13.9	3.76	224D	1750*800*1130	840	2150*920*1200	1050
GFS-60	48	60	52.8	66	ZH4105ZLD	56	4	14.9	3.76	224E	1950*820*1220	1000	2350*950*1250	1100
GFS-75	60	75	66	83	R4105AZLD	66	4	18.8	4.5	224F	1960*860*1250	1030	2400*950*1230	1250
GFS-80	64	80	70	88	R4108IZD	75	4	20.1	4.95	224GS	2000*850*1250	1060	2500*1000*1350	1300
GFS-85	68	85	75	94	R4108IZLD	84	4	21.5	4.95	224G	2000*850*1300	1100	2500*1000*1350	1400
GFS-100	80	100	88	110	R6105AZD	96	6	23.2	4.95	274C	2230*900*1400	1200	2700*1050*1430	1500
GFS-125	100	125	110	138	R6105AZLD	121	6	32.3	6.75	274DS	2300*900*1400	1260	2800*1080*1450	1580
GFS-150	120	150	132	165	R6105IZLD	132	6	33.2	7.1	274FS	2400*950*1400	1300	2900*1080*1500	1620
GFS-160	128	160	141	176	R6105IZLD	132	6	35.2	7.1	274F	2400*900*1400	1350	2900*1050*1500	1700
GFS-188	150	188	165	206	R6108ZLD	170	6	47.6	7.41	274G	2500*950*1400	1480	3000*1100*1700	1800
GFS-225	180	225	198	248	R9768D	215	6	53.2	9.726	274J	2850*1020*1600	1570	3000*1100*1700	1900
GFS-250	200	250	220	275	YXR9768D-1	245	6	63.6	9.726	274K	3000*1050*1800	2200	3600*1200*1950	2700
GFS-300	240	300	264	330	YXR11D	308	6	79.9	11	314D	3000*1050*1800	2900	3900*1400*2100	3500



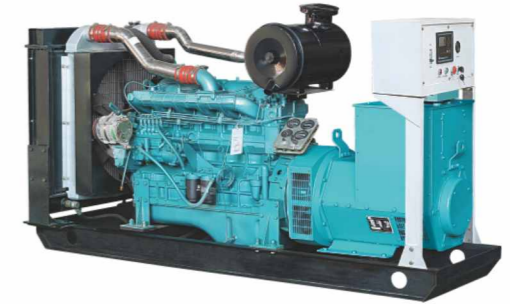
MAINTAIN IN ANY  
CONDITION

2 YEAR  
WARRANTY

SMALL PARTS  
SUPPLY



EM-YC110



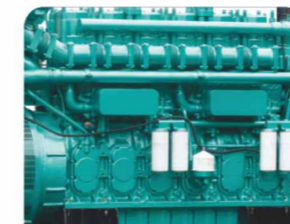
EM-YC275



EM-YC990



EM-YC1650



Yuchai engine



Digital control panel



Terminal box inside



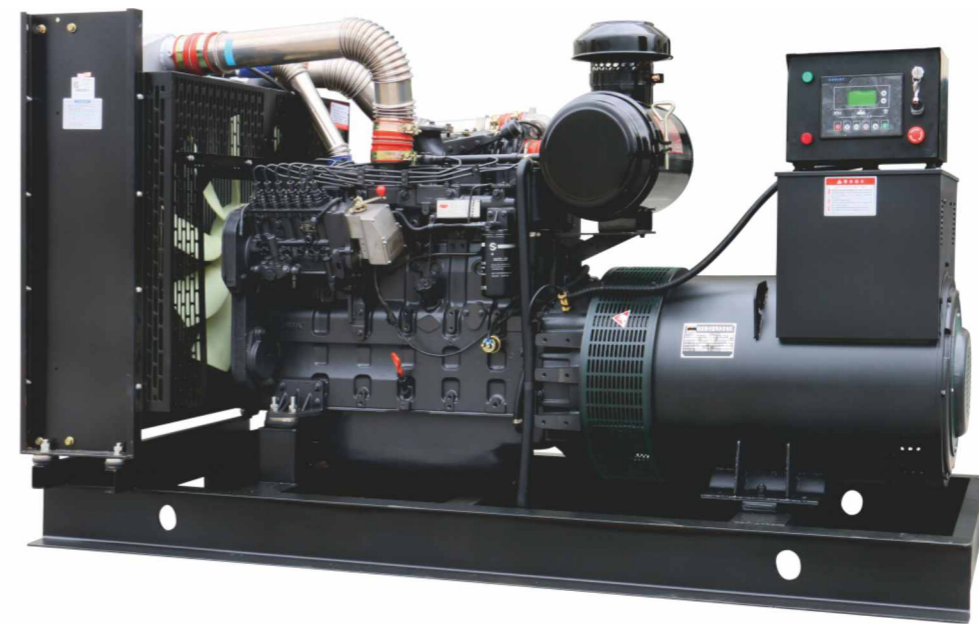
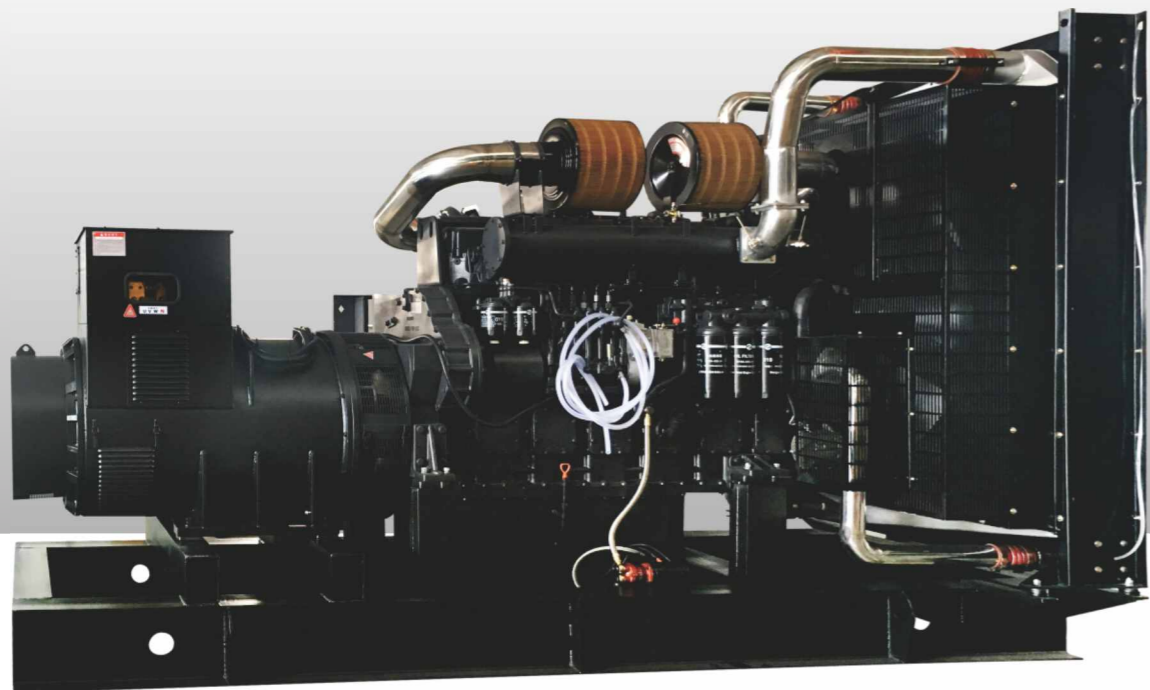
Quality warranty brushless  
Alternator

# YUCHAI

DIESEL GENERATOR SETS

Model	Gensets				Technical Data of Diesel Engine					Alternator	Size & Weight			
	Gensets power				Engine model	Engine power kw	Cyl No.	Fuel consumption L/h	Displa- cV/Gent (L)		Open Type Size (mm)	Weight (KG)	Silent Type Size (mm)	Weight (KG)
	Prime kw	Standby kVA	Prime kw	Standby kVA										
VG-Y41	30	38	33	41	YC4D60-D21	40	4	11.1	4.2	VG-184H	1850*800*1050	700	2200*1000*1200	850
VG-Y50	36	45	40	50	YC4D60-D21	40	4	11.1	4.2	VG-224C	1850*800*1050	800	2200*1000*1200	950
VG-Y66	48	60	53	66	YC4D85Z-D20	55	4	14.7	4.2	VG-224E	1950*900*1100	800	2300*1000*1200	1100
VG-Y69	50	63	55	69	YC4D90Z-D20	60	4	14.3	4.2	VG-224E	1950*900*1100	850	2300*1000*1200	1100
VG-Y83	60	75	66	83	YC4A100Z-D20	65	4	16.7	4.8	VG-224F	1950*900*1100	900	2300*1000*1200	1100
VG-Y88	64	80	70	88	YC6B100-D20	70	6	16.1	6.8	VG-224G	2200*900*1350	950	2700*1100*1500	1100
VG-Y110	80	100	88	110	YC6B135Z-D20	90	6	20.7	6.8	VG-274C	2200*900*1350	1100	2700*1100*1500	1500
VG-Y124	90	113	99	124	YC6B155L-D21	103	6	23.7	6.8	VG-274DS	2400*1050*1400	1150	2800*1100*1600	1500
VG-Y138	100	125	110	138	YC6B180L-D20	120	6	27.6	6.8	VG-274D	2400*1050*1400	1250	2800*1100*1600	1500
VG-Y165	120	150	132	165	YC6B205L-D20	138	6	28.6	6.8	VG-274FS	2600*1050*1400	1300	2900*1100*1600	1680
VG-Y198	144	180	158	198	YC6A230L-D20	155	6	34.6	7.2	VG-274G	2600*1050*1400	1300	2900*1100*1600	1680
VG-Y206	150	188	165	206	YC6G245L-D21	165	6	37.4	7.8	VG-274G	2600*1050*1400	1400	3000*1100*1600	1850
VG-Y220	160	200	176	220	YC6G270L-D20	180	6	40.8	7.8	VG-274H	2600*1050*1400	1450	3100*1100*1700	1850
VG-Y275	200	250	220	275	YC6MK350L-D20	235	6	53.3	9.8	VG-274K	2800*1100*1500	1600	3500*1200*1800	2200
VG-Y358	260	325	286	358	YC6MK420L-D20	281	6	63.7	10.3	VG-C4ES	3300*1100*1700	2000	3800*1250*2000	2700
VG-Y385	280	350	308	385	YC6MJ480L-D20	321	6	72.8	11.7	VG-C4FS	3300*1100*1700	2200	3800*1250*2000	2700

Model	Gensets				Technical Data of Diesel Engine					Alternator	Size & Weight			
	Gensets power				Engine model	Engine power kw	Cyl No.	Fuel consumption L/h	Displa- cV/Gent (L)		Open Type Size (mm)	Weight (KG)	Silent Type Size (mm)	Weight (KG)
	Prime kw	Standby kVA	Prime kw	Standby kVA										
VG-Y413	300	375	330	413	YC6K500-D30	335	6	73.9	12.1	VG-C4FS	3300*1100*1700	3100	3800*1250*2000	3800
VG-Y440	320	400	352	440	YC6K520-D30	368	6	82.1	12.1	VG-C4F	3500*1300*1700	3150	4000*1400*2000	3800
VG-Y481	350	438	385	481	YC6K570-D30	389	6	86.8	12.9	VG-C5C	3800*1400*1800	3600	4300*1600*2100	4200
VG-Y495	360	450	396	495	YC6T600L-D22	401	6	95.6	16.3	VG-C5C	3800*1400*1800	3700	4300*1600*2100	4200
VG-Y550	400	500	440	550	YC6T660L-D20	441	6	105.1	16.3	VG-C5D	3800*1400*1800	4000	4300*1600*2100	5000
VG-Y619	450	563	495	619	YC6TD780L-D20	520	6	123.9	19.6	VG-C5E	3800*1400*1800	4400	4300*1600*2100	5500
VG-Y688	500	625	550	688	YC6TD840-D20	560	6	133.5	19.6	VG-C5FS	3800*1400*1800	4500	4300*1600*2100	5500
VG-Y825	600	750	660	825	YC6C1020L-D20	680	6	170.0	39.6	VG-LV6B	4100*1400*2300	6300	20'GP	8800
VG-Y880	640	800	704	880	YC6C1070L-D20	715	6	178.7	39.6	VG-LV6C	4100*1400*2300	6500	20'GP	8800
VG-Y990	720	900	792	990	YC6C1220L-D20	815	6	203.7	39.6	VG-LV6D	4100*1400*2300	6800	20'GP	8900
VG-Y1100	800	1000	880	1100	YC6C1320L-D20	880	6	220.0	39.6	VG-LV6E	4100*1400*2300	7310	20'GP	9100
VG-Y1375	1000	1250	1100	1375	YC12VC1680L-D20	1120	12	273.5	79.1	LV-LV6G	5300*2000*2500	11000	40'HQ	13000
VG-Y1650	1200	1500	1320	1650	YC12VC2070L-D20	1380	12	337.0	79.1	LV-PI7C	5300*2000*2500	11500	40'HQ	13500
VG-Y1856	1350	1688	1485	1856	YC12VC2270L-D20	1520	12	371.1	79.1	VG-PI7D	5300*2300*2500	11800	40'HQ	14000
VG-Y2035	1480	1850	1628	2035	YC12VC2510L-D20	1680	12	410.2	79.1	VG-PI7E	5300*2300*2500	12200	40'HQ	14500



Shanghai engine

Digital control panel

Terminal box inside

Quality warranty brushless  
Alternator

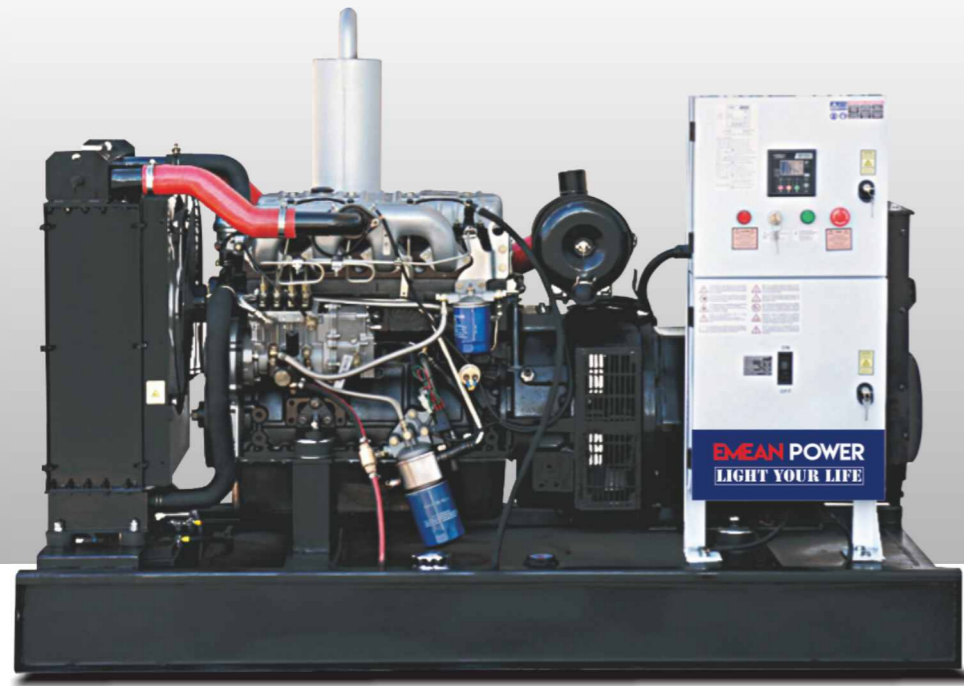
# SDEC

DIESEL GENERATOR SETS

Model	Gensets				Technical Data of Diesel Engine					Alternator	Size & Weight			
	Gensets power				Engine model	Engine power	Cyl	Fuel consumption	Displa-cvGent		Open Type Size	Weight	Silent Type Size	Weight
	Prime	Standby	kw	kVA										
VG-S28	20	25	22	28	4H4.3-G11	30	4	8.2	4.3	VG-184F	1820*700*1280	690	2000*950*1250	980
VG-S33	24	30	26	33	4H4.3-G21	30	4	8.2	4.3	VG-184G	1820*700*1280	705	2200*950*1250	1020
VG-S50	36	45	40	50	4H4.3-G12	42	4	11.5	4.3	VG-224C	1950*700*1280	785	2280*1000*1250	1120
VG-S50	36	45	40	50	4H4.3-G22	42	4	11.5	4.3	VG-224C	1950*700*1280	785	2280*1000*1250	1120
VG-S55	40	50	44	55	4HT4.3-G21	51	4	12.8	4.3	VG-224D	1950*700*1280	805	2400*1000*1250	1200
VG-S69	50	63	55	69	4HT4.3-G22	62	4	15.1	4.3	VG-224E	2070*750*1280	875	2500*1000*1250	1280
VG-S88	64	80	70	88	4HT4.3-G23	78	4	19.5	4.3	VG-224G	2170*750*1280	970	2600*1000*1350	1340
VG-S103	75	94	83	103	4HTAA4.3-G11	95	4	23	4.3	VG-274C	2250*800*1350	1050	2800*1000*1350	1450
VG-S110	80	100	88	110	4HTAA4.3-G21	95	4	23	4.3	VG-274C	2250*800*1350	1050	2800*1100*1600	1450
VG-S124	90	113	99	124	4HTAA4.3-G23	105	4	25	4.3	VG-274DS	2250*800*1350	1085	2800*1100*1600	1450
VG-S138	100	125	110	138	4HTAA4.3-G22	120	4	28.3	4.3	VG-274D	2250*800*1350	1100	2900*1100*1600	1520
VG-S138	100	125	110	138	SC4H160D2	107	4	24.92	4.3	VG-274D	2180*800*1510	1117	2900*1100*1600	1560
VG-S149	108	135	119	149	SC4H180D2	120	4	27.95	4.3	VG-274D	2180*800*1510	1117	2900*1100*1600	1560
VG-S154	112	140	123	154	6HTAA6.5-G21	128	6	30.5	6.5	VG-274E	2230*830*1490	1260	3100*1100*1600	1780
VG-S165	120	150	132	165	6HTAA6.5-G22	140	6	33.1	6.5	VG-274FS	2230*830*1490	1310	3100*1100*1600	1820
VG-S176	128	160	141	176	SC8D220D2	146	6	34.35	8.27	VG-274FS	2450*950*1650	1543	3200*1100*1600	2200
VG-S198	144	180	158	198	SC7H230D2	155	6	35.19	6.44	VG-274G	2430*870*1540	1535	3300*1100*1600	2300
VG-S206	150	188	165	206	6HTAA6.5-G11	168	6	39.7	6.5	VG-274G	2640*900*1690	1580	3400*1100*1600	2450
VG-S206	150	188	165	206	6HTAA6.5-G23	168	6	39.7	6.5	VG-274G	2640*900*1690	1580	3400*1100*1600	2450
VG-S206	150	188	165	206	SC7H250D2	168	6	38.15	6.44	VG-274G	2430*870*1540	1535	3400*1100*1600	2450
VG-S220	160	200	176	220	6DTAA8.9-G21	185	6	44.1	8.82	VG-274H	2720*880*1690	1707	3400*1100*1600	2630

Model	Gensets				Technical Data of Diesel Engine					Alternator	Size & Weight			
	Gensets power				Engine model	Engine power	Cyl	Fuel consumption	Displa-cvGent		Open Type Size	Weight	Silent Type Size	Weight
	Prime	Standby	kw	kVA										
VG-S220	160	200	176	220	SC8D280D2	185	6	43.53	8.27	VG-274H	2540*950*1650	1851	3400*1100*1600	2740
VG-S220	160	200	176	220	SC13G280D2	187	6	44	12.88	VG-274H	2800*1172*1750	2401	3400*1100*1600	3120
VG-S248	180	225	198	248	6DTAA8.9-G24	208	6	49.6	8.82	VG-274J	2850*880*1690	1830	3600*1200*1700	2980
VG-S248	180	225	198	248	SC9D310D2	208	6	48.94	8.82	VG-274J	2690*950*1700	2001	3600*1200*1700	3100
VG-S275	200	250	220	275	6DTAA8.9-G22	220	6	52.7	8.82	VG-274K	2850*880*1690	1850	3600*1200*1700	2980
VG-S275	200	250	220	275	6DTAA8.9-G23	230	6	55.1	8.82	VG-274K	2850*880*1690	1850	3600*1200*1700	2980
VG-S275	200	250	220	275	SC9D340D2	228	6	52.31	8.82	VG-274K	2690*950*1700	2161	3600*1200*1700	3120
VG-S275	200	250	220	275	SC13G355D2	236	6	55.53	12.88	VG-274K	2980*1172*1750	2561	3600*1200*1700	2980
VG-S330	240	300	264	330	6ETAA11.8-G21	307	6	72.9	11.8	VG-C4D	3020*1100*1850	2550	3900*1300*2200	3250
VG-S344	250	313	275	344	SC13G420D2	280	6	65.88	12.88	VG-C4D	2980*1260*1840	2801	3900*1300*2200	3500
VG-S385	280	350	308	385	SC12E460D2	307	6	69.35	11.8	VG-C4E	3070*1100*1840	2742	3900*1300*2200	3400
VG-S413	300	375	330	413	6ETAA11.8-G31	340	6	79.9	11.8	VG-C4FS	3180*1360*2010	2830	3900*1300*2200	3500
VG-S413	300	375	330	413	SC15G500D2	330	6	77.64	14.16	VG-C4FS	3080*1260*1840	2990	3900*1300*2200	3600
VG-S413	300	375	330	413	SC12E500D3	333	6	75.22	11.8	VG-C4FS	3150*1160*1760	2819	3900*1300*2200	3500
VG-S481	350	438	385	481	SC25G610D2	400	12	95.06	25.8	VG-C5C	3300*1620*2100	4155	4500*1600*2200	5900
VG-S550	400	500	440	550	SC25G690D2	459	12	109.08	25.8	VG-C5D	3300*1620*2100	4315	4500*1600*2200	5900
VG-S619	450	563	495	619	SC27G750D2	513	12	121.91	26.6	VG-C5ES	3300*1620*2100	4550	4500*1600*2200	6100
VG-S688	500	625	550	688	SC27G830D2	555	12	131.89	26.6	VG-C5FS	3300*1620*2100	4600	4500*1600*2200	6150
VG-S825	600	750	660	825	SC33W990D2	660	6	166.94	32.8	VG-LV6B	3540*1620*2100	5336	4800*1800*2200	6850

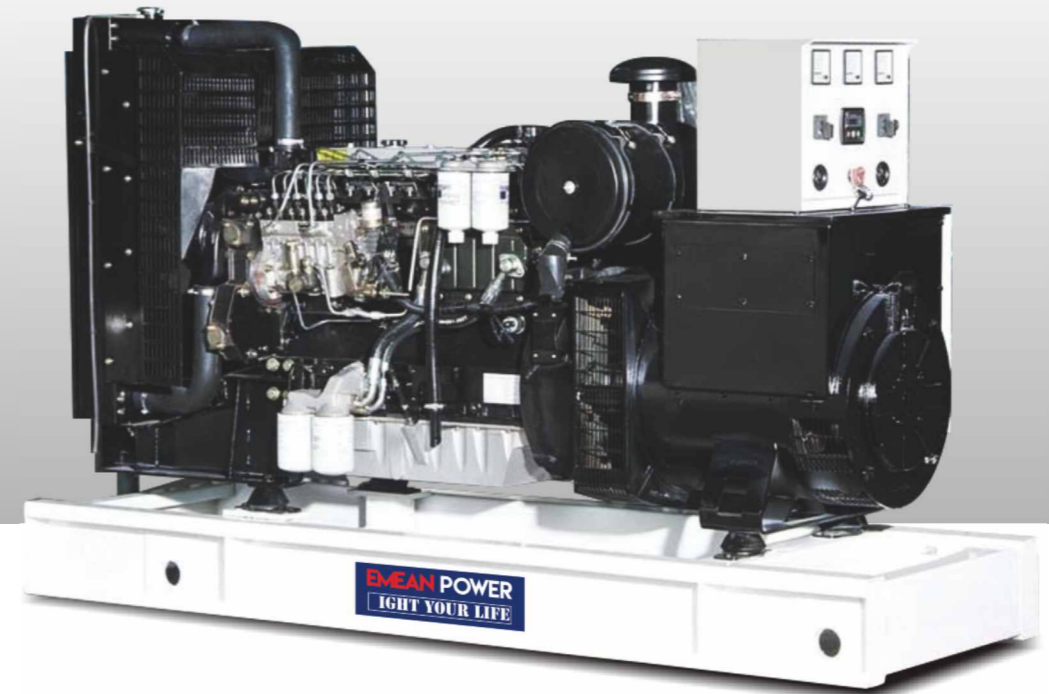




  
MAINTAIN IN ANY  
CONDITION

  
2 YEAR  
WARRANTY

  
SMALL PARTS  
SUPPLY



## YANGDONG

DIESEL GENERATOR SETS

Model	Gensets				Technical Data of Diesel Engine					Alternator	Size & Weight			
	Gensets power				Engine model	Engine power kw	Cylinder No.	Fuel consumption L/h	Displa- cement (L)		Open Type Size (mm)	Weight (KG)	Silent Type Size (mm)	Weight (KG)
	Prime kw	Standby kVA	Prime kw	Standby kVA										
VG-Y10	7	9	7.7	10	YD380D	10	3	3.1	1.357	VG-164B	1520*670*1110	500	1700*900*1130	630
VG-Y12	9	11	9.9	12	YD385D	11	3	3.3	1.532	VG-164C	1520*670*1110	500	1700*900*1130	640
VG-Y14	10	12.5	11	14	YD480D	14	4	4.2	1.809	VG-164C	1520*670*1110	520	1750*930*1125	690
VG-Y17	12	15	13	17	YD485D	15	4	4.3	2.043	VG-164D	1520*670*1110	520	1800*930*1130	740
VG-Y18	13	16	14	18	YND485D	17	4	5	2.156	VG-164D	1540*670*1110	540	1800*930*1130	750
VG-Y20	15	19	16.5	20	YND490D	21	4	6.1	2.540	VG-184ES	1540*750*1130	540	1900*930*1130	760
VG-Y22	16	20	17.6	22	YSD490D	21	4	6.2	2.540	VG-184ES	1540*750*1130	580	1900*930*1130	780
VG-Y26	19	24	21	26	Y490D	24	4	7	2.670	VG-184FS	1540*750*1130	610	1950*930*1125	820
VG-Y28	20	25	22	28	Y495D	27	4	7.7	2.977	VG-184FS	1540*750*1130	610	1950*930*1125	840
VG-Y33	24	30	26.4	33	Y4100D	30	4	8.5	3.707	VG-184G	1600*750*1130	610	2000*930*1150	880
VG-Y34	25	31	27.5	34	Y4102D	33	4	8.2	3.857	VG-184G	1600*750*1130	700	2000*930*1150	890
VG-Y41	30	37.5	33	41	Y4105D	38	4	10.6	4.087	VG-184H	1650*750*1130	720	2100*930*1225	906
VG-Y52	38	47.5	42	52	Y4102ZLD	48	4	12.8	3.857	VG-224D	1840*750*1130	790	2200*950*1200	1100
VG-Y55	40	50	44	55	Y4105ZLD	55	4	14.4	4.087	VG-224D	1840*750*1130	790	2200*950*1200	1150
VG-Y69	50	62.5	55	69	YD4EZLD	63	4	16.5	4.087	VG-224E	1850*750*1130	800	2300*950*1200	1200
		75	66	83	Y4110ZLD	80	4	21	4.484	VG-224F	1900*750*1130	850	2400*1000*1200	1250

## LOVOL

DIESEL GENERATOR SETS

Model	Gensets				Technical Data of Diesel Engine					Alternator	Size & Weight			
	Gensets power				Engine model	Engine power kw	Cylinder No.	Fuel consumption L/h	Displa- cement (L)		Open Type Size (mm)	Weight (KG)	Silent Type Size (mm)	Weight (KG)
	Prime kw	Standby kVA	Prime kw	Standby kVA										
VG-L33	24	30	26	33	1003G	28	3	6.1	3	VG-184G	1600*800*1050	800	2000*900*1150	1000
VG-L47	34	43	37	47	1004G	40	4	6.9	4	VG-224C	1600*800*1050	800	2100*900*1150	1100
VG-L55	40	50	44	55	1003TG	44	3	6.9	3	VG-224D	1700*850*1100	900	2200*950*1200	1200
VG-L66	48	60	53	66	1004TG1A	52	4	11.3	4	VG-224E	1700*850*1100	950	2300*950*1200	1200
VG-L80	58	73	64	80	1004TG	66	4	15.9	4	VG-224F	1700*850*1100	950	2300*950*1200	1350
VG-L94	68	85	75	94	1006TG1A	84	6	20	6	VG-224G	1800*1000*1100	1100	2300*1100*1200	1500
VG-L107	78	98	86	107	1006TG3A	86	6	20	6	VG-274C	1800*1000*1100	1300	2350*1100*1200	1800
VG-L110	80	100	88	110	1006TG2A	92	6	20	6	VG-274C	1800*1000*1100	1300	2350*1100*1200	1800
VG-L138	100	125	110	138	1006TAG1A	108	6	28	6	VG-274ES	2050*1000*1050	1300	2500*1100*1250	1800
VG-L149	108	135	119	149	1006TAG	121	6	28	6	VG-274E	2050*1000*1050	1300	2500*1100*1250	1800
VG-L165	120	150	132	165	1106C-P6TAG2	130	6	28	6	VG-274FS	2050*1000*1050	1500	2500*1100*1250	2100
VG-L179	130	163	143	179	1106C-P6TAG3	141	6	28	6	VG-274F	2050*1000*1200	1600	2500*1100*1350	2100
VG-L201	146	183	161	201	1106C-P6TAG4	158	6	25.6	6	VG-274G	2100*1050*1300	1600	2700*1150*1400	2100

# ISUZU

## DIESEL GENERATOR SETS

Model	Gensets				Technical Data of Diesel Engine					Alternator	Size & Weight			
	Gensets power		Engine model	Engine power kw	Cylinder No.	Fuel consumption L/h	Displacement (L)	Open Type Size (mm)	Weight (KG)		Silent Type Size (mm)	Weight (KG)		
	Prime kw	Standby kVA											kw	kVA
VG-I28	20	25	22	27.5	JE493G	24	4	6.4	2.771	VG-184F	1750*700*1000	650	1850*900*1100	770
VG-I28	20	25	22	27.5	JE493GE	24	4	6.4	2.771	VG-184F	1750*700*1000	660	1850*900*1100	770
VG-I33	24	30	26.4	33	JE493GT	28	4	7.5	2.771	VG-184G	1800*700*1000	680	1950*900*1100	820
VG-I41	30	37.5	33	41.25	JE493GTA	36	4	9.4	2.771	VG-184H	1800*700*1000	700	1950*900*1100	850
VG-I55	40	50	44	55	JE493GTB	43	4	10.6	2.771	VG-224D	1850*700*1000	780	2100*900*1150	950
VG-A22	16	20	17.6	22	4JB1	24	4	5.6	2.771	VG-184ES	1750*700*1000	650	1850*900*1100	750
VG-A28	20	25	22	27.5	4JB1T	28	4	6.4	2.771	VG-184F	1750*700*1000	650	1850*900*1100	770
VG-A33	24	30	26.4	33	4JB1T	28	4	6.4	2.771	VG-184G	1750*700*1000	660	1850*900*1100	770
VG-A41	30	37.5	33	41	4JB1TA	36	4	7.5	2.771	VG-184H	1800*700*1000	680	1900*900*1100	820
VG-A50	36	45	39.6	50	4JB1TA-S	45	4	9.4	2.771	VG-224C	1800*700*1000	700	1950*900*1100	850
VG-A55	40	50	44	55	4BD1-Z	48	4	10.6	3.856	VG-224D	1850*700*1000	780	2100*900*1150	950
VG-A69	50	62.5	55	69	4BG1-Z	59	4	13	4.330	VG-224E	1950*800*1100	850	2400*950*1250	1050
VG-A103	75	94	82.5	103	6BG1-Z1	95	6	20.2	6.490	VG-274CS	2300*900*1350	1100	2800*1080*1450	1500
VG-A124	90	112.5	99	124	6BG1-ZL1	105	6	22.7	6.490	VG-274D	2300*900*1350	1200	2800*1080*1450	1580

# VMAN

## DIESEL GENERATOR SETS

Model	Gensets				Technical Data of Diesel Engine					Alternator	Size & Weight			
	Gensets power		Engine model	Engine power kw	Cylinder No.	Fuel consumption L/h	Displacement (L)	Open Type Size (mm)	Weight (KG)		Silent Type Size (mm)	Weight (KG)		
	Prime kw	Standby kVA											kw	kVA
VG-V242	220	275	242	303	D11A2	240	6	57.05	10.964	VG-C4C	3000*1100*1800	2550	3800*1250*2000	3230
VG-V264	240	300	264	330	D11A1	265	6	63.38	10.964	VG-C4D	3000*1100*1800	2750	3800*1250*2000	3400
VG-V286	260	325	286	358	D11A	285	6	67.82	10.964	VG-C4ES	3000*1100*1800	2790	3800*1250*2000	3500
VG-V330	300	375	330	413	D15A2	330	8	80.23	14.618	VG-C4FS	3020*1100*1850	2825	3900*1270*2200	3600
VG-V352	320	400	352	440	D15A1	365	8	88.7	14.618	VG-C4FS	3020*1100*1850	2915	3900*1270*2200	3600
VG-V396	360	450	396	495	D15A	405	8	101	14.618	VG-C5C	3020*1100*1850	2915	3900*1270*2200	3600
VG-V440	400	500	440	550	D22A3	455	12	109.42	21.927	VG-C5C	3400*1300*1950	4350	4500*1400*2200	5200
VG-V495	450	563	495	619	D22A2	515	12	123.54	21.927	VG-C5D	3510*1300*2000	4350	4500*1400*2200	5200
VG-V550	500	625	550	688	D22A	555	12	133.07	21.927	VG-C5FS	3510*1300*2000	4350	4500*1400*2200	5200
VG-V616	560	700	616	770	D22	630	12	157.27	21.927	VG-LV6B	3510*1300*2000	4350	4500*1400*2200	5200
VG-V693	630	788	693	866	D30A3	705	16	174.98	29.235	VG-LV6C	3500*1300*2000	4600	4500*1400*2200	5500
VG-V770	700	875	770	963	D30A2	795	16	200.28	29.235	VG-LV6D	4500*1800*2300	6800	5500*2000*2550	8000
		975	858	1072.5	D30A1	875	16	223.07	29.235	VG-LV6E	4500*1800*2300	7000	5500*2000*2550	8800

## GASOLINE GENERATOR



EM900



EM1500



EM2500A



EM6500A

Model	Gensets			Engine				Package					
	Rated AC Voltage (V)	Rated AC Output (kW)	Max. AC Output (kW)	Engine type	Max. Output (HP)	Starting System	Ignition System	Fuel tank (L)	Oil capacity (L)	Dimension L x W x H (mm)	G.W. (kg)	20'FCL (pcs)	40'FCL (pcs)
EM600	220	0.5	0.65	2stroke				4	50:1 per:oil	380x320x330	18	750	1600
EM900		0.65	0.8			Recoil		4		380x320x330	19	750	1600
EM1500		1.0	1.2					6	0.3	470x370x380	28	450	1090
EM2500A		2.0	2.2	4 stroke, 25 <sup>1</sup> single Cylinder With Air-cooled	6.5	Recoil / Electric start	Non-contact Ignition(T.C.I.)	15	0.6	610x440x460	40	235	580
EM3500A		2.5	2.7		6.5			15	0.6	610x440x460	42	235	580
EM4800A		3.0	3.2		7.5			15	0.6	610x440x460	44	235	580
EM5500A		4.0	4.5		13			25	1.1	690x553x555	88	132	272
EM6500A		5.0	5.5		15			25	1.1	690x553x555	91	132	272
EM8000A		6.0	6.5		15			25	1.1	690x553x555	93	132	272
EM10000A		7.0	7.5		17			25	1.1	695x530x570	95	132	272

## DIESEL GENERATOR



ED5000AE



ED5000AEL



ED6000SE



ED8000SE

Model	Gensets		Vertical, 4-stroke air-cooled diesel engine				Package					
	Prime Power (kW)	Max Power (kW)	DC output	Model	No.	Fuel tank (L)	Oil capacity (L)	Dimension L x W x H (mm)	G.W. (kg)	20'FCL (pcs)		
VG3500KE	2.7	3	3	3.3	12V-8.3A	VG178FAE	Single	15	1.1	900*570*730	135	72
VG5500KE	4.6	5	5	5.5		VG186FAE	Single	15	1.65	940*570*730	163	72
VG6500KE	5.5	6	6	6.5		VG188FAE	Single	15	1.65	940*570*730	163	72
VG7500KE	6	7	6.5	7.5		VG192FAE	Single	15	1.65	940*570*730	163	72
VG12000KE	10	11	11	12		VG292FE	Two	30	4	1230*860*935	310	24



# VG

SERIES BRUSHLESS SYNCHRONOUS AC ALTERNATORS



High quality big shaft

Excellent stator

Cold-rolled sheet

H class big copper wire

## FEATURE

- Can be coupled with any permanent magnetic generators, providing invariable excitation on all occasions.
- Comply with the most common standard in terms of GB755, IEC60034, Bs5000, VDE0530, CSAC22.2-100.
- Single or double bearings are available, options for all kinds of adaptors and disc plates.
- 12-end reconnectable winding terminals to get different voltages
- Standard "H" insulation class.
- Convenient installation and maintenance for lead-end rotated diodes and adaptor connected bolts.
- Standard sealed maintenance-free bearings.
- Standard Ip23 protection, optional severe environment protection.

## TECHNICAL PERFORMANCE

- Adjusting Rate of Stable Voltage:  $\pm 0.5\%$
- Adjusting Rate of Instant Voltage:  $\geq -15\% \leq \sim +20\%$
- Adjusting Rate of Volatge:  $\geq \pm 25\%$
- Insulation Class: H
- Constant Working Type: S1
- Protection Class: IP23

Model	Rated Output		Standard Core Length	Standard SAE No.	Single Bearing			Double Bearing		
	50Hz	60Hz			N.W	G.W	Package Size	N.W	G.W	Package Size
	KW	KW			kg	kg	cm	kg	kg	cm
VG-164A	6.8	8	L=65	4#7.5	85	95	53x55x59	91	101	62x55x59
VG-164B	8.8	10	L=80	4#7.5	90	100	53x55x59	98	108	62x55x59
VG-164C	10.8	12.8	L=100	4#7.5	96	106	53x55x59	106	116	62x55x59
VG-164D	12.8	16	L=115	4#7.5	99	109	53x55x59	112	122	62x55x59
VG-184ES	15	18	L=130	4#7.5	116	126	58x55x59	128	138	67x55x59
VG-184E	18	22	L=150	3#11.5	120	130	58x55x59	131	141	67x55x59
VG-184F	22	26	L=190	3#11.5	150	160	67x55x59	154	164	74x55x59
VG-184G	25	30	L=230	3#11.5	156	166	67x55x59	170	180	74x55x59
VG-184H	30	36	L=255	3#11.5	216	226	74x55x59	220	230	80x55x59
VG-184J	32	38	L=285	3#11.5	226	236	74x55x59	230	240	80x55x59
VG-224C	34	40	L=134	3#11.5	235	255	82x55x81	250	275	82x55x81
VG-224D	40	48	L=160	3#11.5	250	270	82x55x81	270	295	82x55x81
VG-224E	48	58	L=186	3#11.5	270	290	91x55x81	290	315	91x55x81
VG-224F	58	70	L=248	3#11.5	310	330	91x55x81	320	345	91x55x81
VG-224G	68	80	L=309	3#11.5	350	370	96x55x81	360	385	96x55x81
VG-274C	80	96	L=165	3#11.5	385	415	91x65x87	395	435	93x65x87
VG-274D	96	115	L=205	3#11.5	405	435	91x65x87	420	460	93x65x87
VG-274E	112	135	L=230	3#11.5	455	485	100x65x87	470	510	105x65x87
VG-274F	125	150	L=285	3#11.5	500	530	100x65x87	510	550	105x65x87
VG-274G	144	180	L=340	3#11.5	550	580	105x65x87	560	600	110x65x87
VG-274H	160	195	L=375	3#11.5	600	630	110x65x87	610	650	114x65x87
VG-274J	180	220	L=410	3#11.5	720	760	115x70x90			
VG-274K	200	240	L=450	3#11.5	740	780	115x70x90			
VG-444C	200	240	L=275	1#14	850.5	910	130x77x99			
VG-444D	240	300	L=340	1#14	915.5	975	130x77x99			
VG-444ES	260	320	L=410	1#14	995.5	1055	130x77x99			
VG-444E	280	340	L=420	1#14	995.5	1055	130x77x99			
VG-444FS	300	360	L=500	1#14	1123.5	1183	139x77x99			
VG-444F	320	385	L=500	1#14	1123.5	1183	139x77x99			
VG-544C	360	440	L=350	0#14	1250	1350	146x84x100			
VG-544D	400	480	L=430	0#14	1358	1450	146x84x100			
VG-544E	480	600	L=500	0#14	1498	1598	146x84x100			
VG-544F	550	680	L=575	0#14	1653	1753	154x84x100			

# Diesel Generator Set Technology Standard



## Geneset more options

As your different life and enviroment demand, we supply you the options spare parts whatever cold or hot area.

Our generator can be operated at outside temperatures between -40°C and +50°C ,without starting aid :-15°C ;with starting aid:-40°C.

Reliable starting even at ice -cold temperatures.

Meet your different demand!

More options,more satisfaction!



## GENERATOR SUPPLY SCOPE



**Engine**  
Brand-new engine



**Silencer**  
Strong thick pipe with heat insulation materials to reduce noise effectively and to avoid excessive temperature in canopy inside



**Alternator**  
Brand new brushless alternator



**Terminal Box Inside**  
Regular internal wire connecting to convenient maintain



**Access**  
Large Canopy doors for convenient maintain and inspection purpose



**Digital Control Panel**  
Branded high quality digital control panel rise the reliability and stability of the genset



**Radiator**  
40°C for open type, 50°C for soundproof type



**Fuel Tank**  
Average 8 hours base fuel tank



**Rain Cover**  
Strong materials cover to avoid rain and dopant in the genset to make sure generator work regularly



**Free spare parts Supply**  
Free charge easy-broken spare parts supply

## GENERATOR OPTIONS



**GenCloud connect with mobilephone & computer**



**50°C-55°C Radiator**



**Single-phase valve**



**External Daily Fuel Tank**



**Automatic Transfer Switch**



**Lub Oil Heater**



**ABB and Schneider Breaker**



**Water Heater**



## A. Product Test logo

Our gensets offered are manufactured strictly accord to the ISO9001-2000 international quality management system. Our genset at least 1 hour on load testing from 25%,50%,75%,100%,110%.



## B. Quality Warranty

Standby” Power Service for 30 months as from the date when the Goods leaves the factory,Or 24 months starting from the date of commissioning of the Goods,Or for 2500 running hours

“Continuous” Power Service for 18 months as from the date when the Goods leaves the factory,Or 12 months starting from the date of commissioning of the Goods,Or 1000 running hours.



### 1. MORE 8 HOURS BOTTOM FUEL TANK WITH FUEL GAUGE

High strength bending base,long-term durability,non-deformation,anti-corrosion,professional baking paint,large capacity,base tank height 24-35mm /12-35mm



### 2.HIGH PERFORMANCE SOUND SUPPRESSOR

The high-grade rubber shock absorber between diesel engine,alternator and frame,it reduce the vibration,reduce the damage for parts,prolong the service life of the unit, double screw design more solid and durable and prevent the loose when running,and to reduce the vibration noise



### 3.Super Quality Canopy & Paint

2-6mm thick high quality ATSM standard steel case,high temperature baking varnish with position pole oxidation---Avoid off paint,More professional



### 4.TRANSPORTABILITY

One-point lifing eye makes it easy to transport all generator.Special forklift opening are provided in the base of the machine.



Convenient refuel port



Engine



Excellent painting



Emergency stop bottom



Control panel cabinet



Ventilation hole



Door Hinge



Convenient refuel port



Control panel cabinet



Convenient maintain door



Top lifting holes



Engine

## Spare parts of diesel generator sets:



## ATS and off-line charger



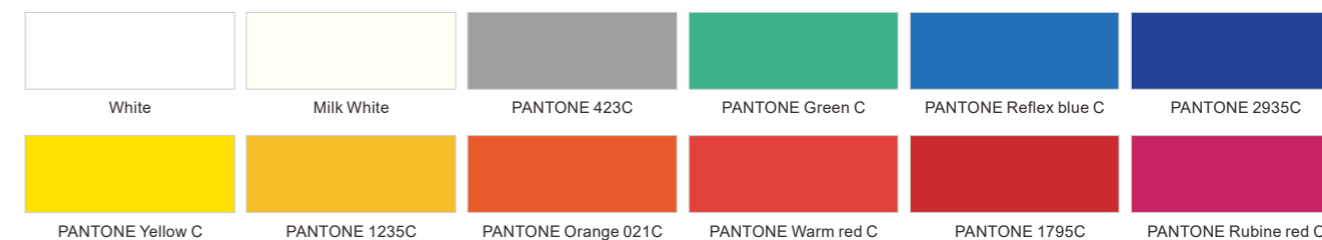
## Control Panel



## Control Cabinet



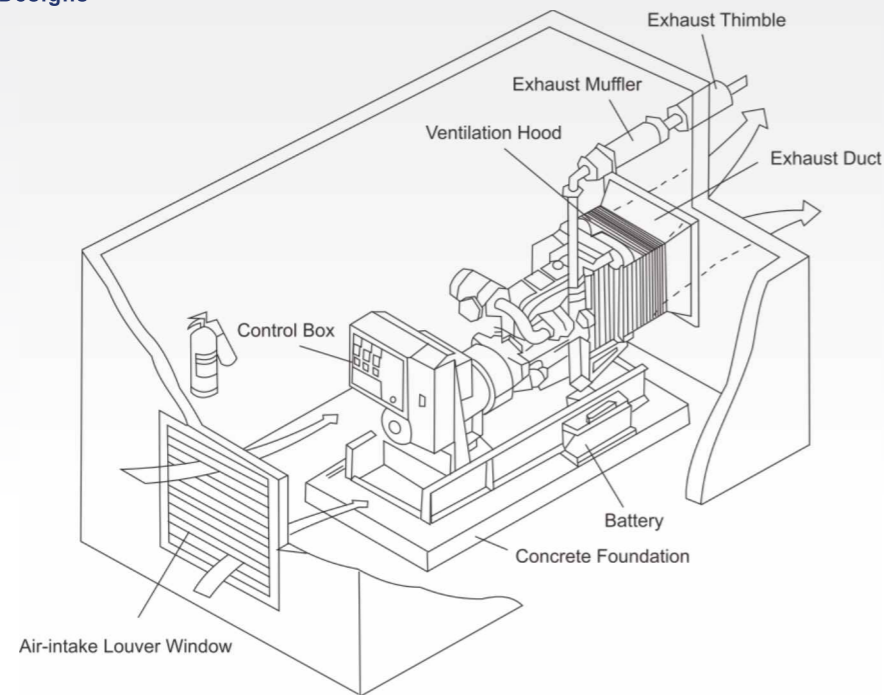
## Different types and colors selection:



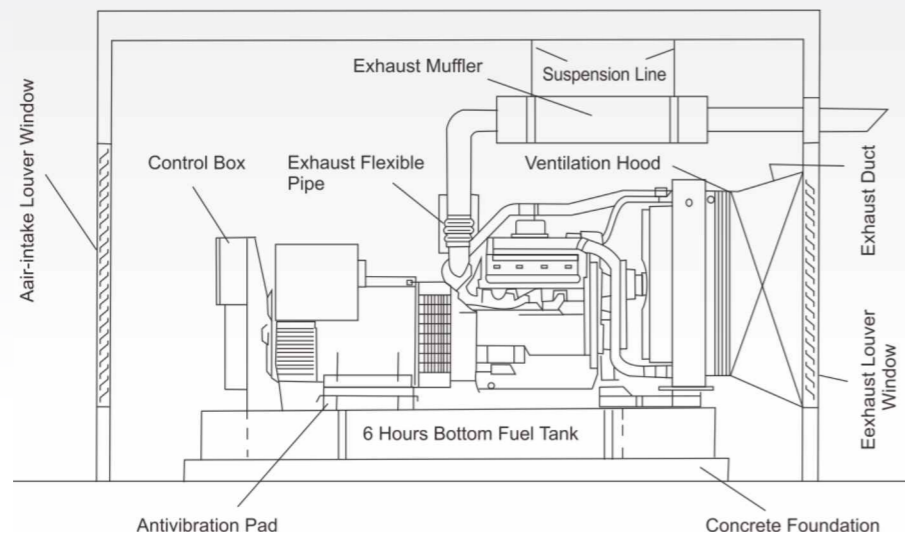
## The standard schematic drawing of deesel generating house

1. Layout of generating house is based on the power capacity of generator set
2. It needs ventilative air while generator set is working normally. So the house should have air-intake and exhaust outlet.
3. exhaust temperature is very high when generator set is running, it is very important to keep the exhaust system ventilating.
4. Building foundation of generting house or not, which is found on actual situation of generating house itself.
5. The size of air-intake and exhaust outlet is based on the capacity of generator set

### Standard Installing Designs



### Standard Installing Designs(Profile)



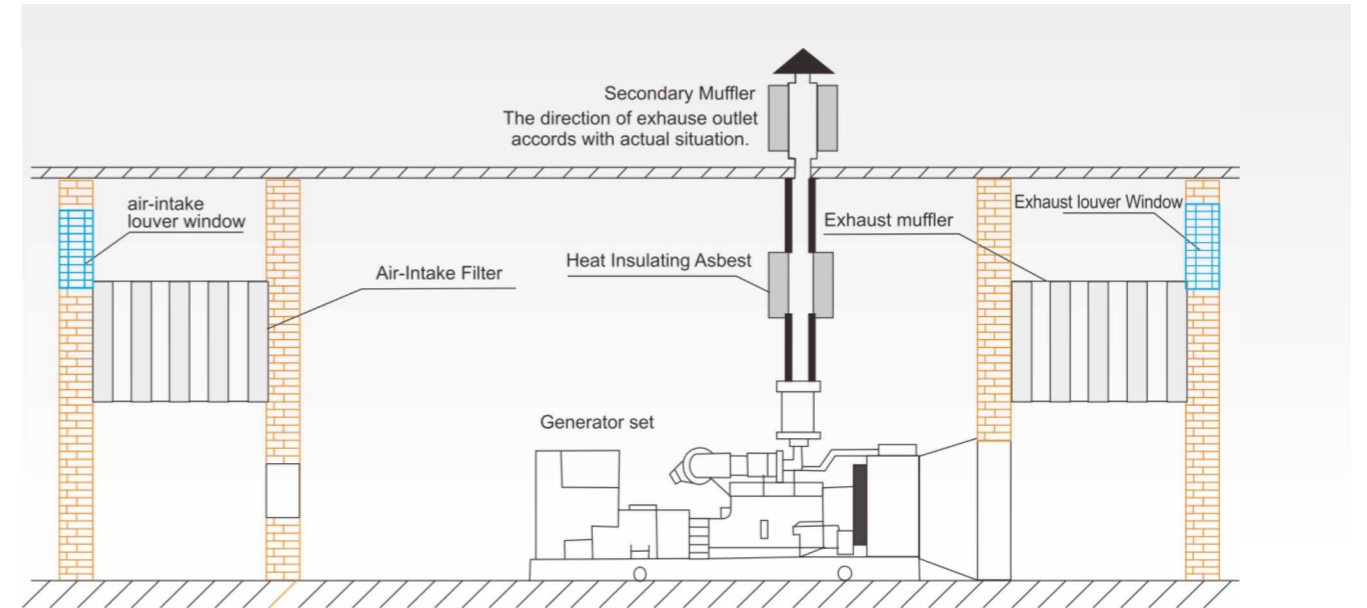
## The schematic drawing of generating house for reduce noise

There is 105-115 db noise from generator when it is running. It is necessary to proceed a noise reduction project for generating house if we want to reduce the noise..

### Drawing as bellow

#### Model A

In this house, we fix soundproof wall for both air-intake and exhaust outlet system. It is the best way to reduce noise and the cost is very low. Choosing Model A as much as possible if you want to build a generating house.



#### Model B

Neither air-intake nor exhaust outlet system has soundproof wall. Although the cost for generating house is lower, cost of soundproof project is much higher.

