



# **Model FZ1-35SL**

*Italian Design*

*Use of the Best Lightweight Materials*

*Fully Customizable*

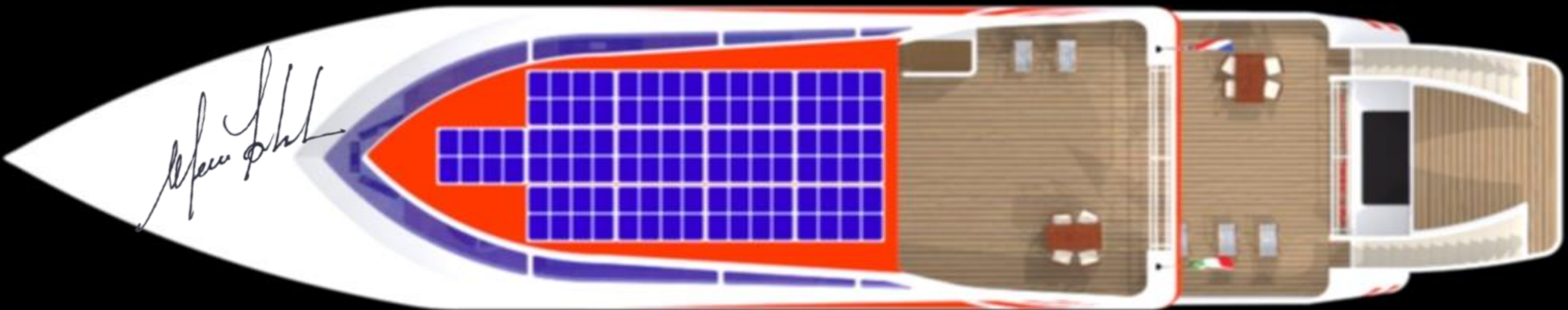
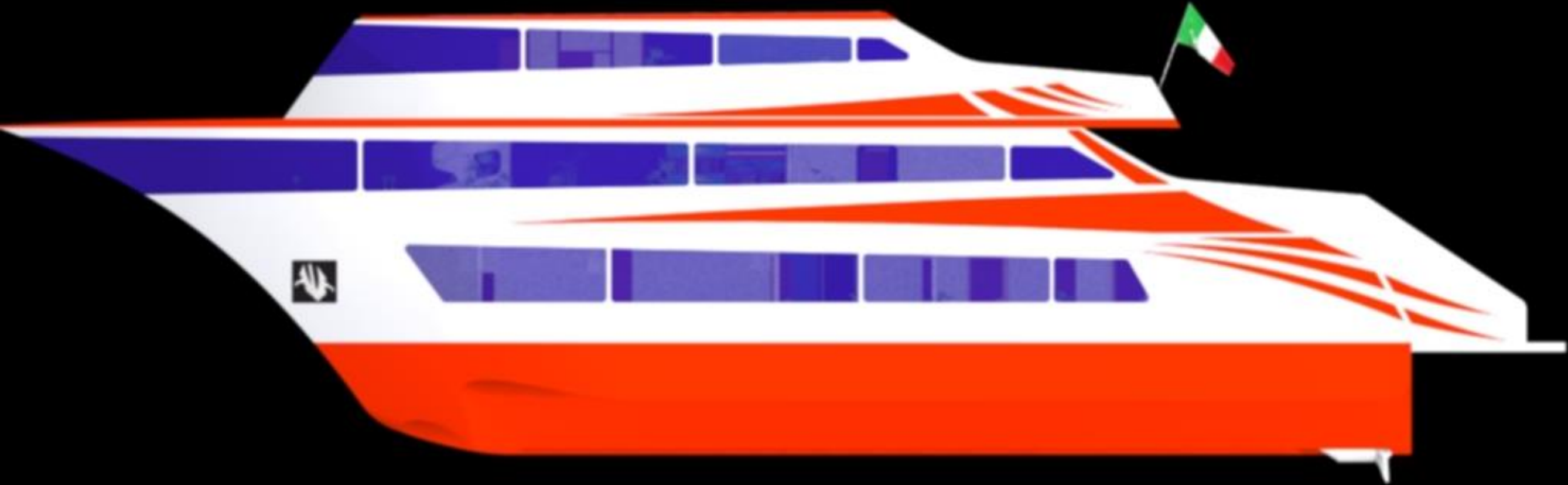
*Designer: Ing. Maurizio Fortunati*

*[www.mogt-engineering.com](http://www.mogt-engineering.com)*



# FZ1-35SL

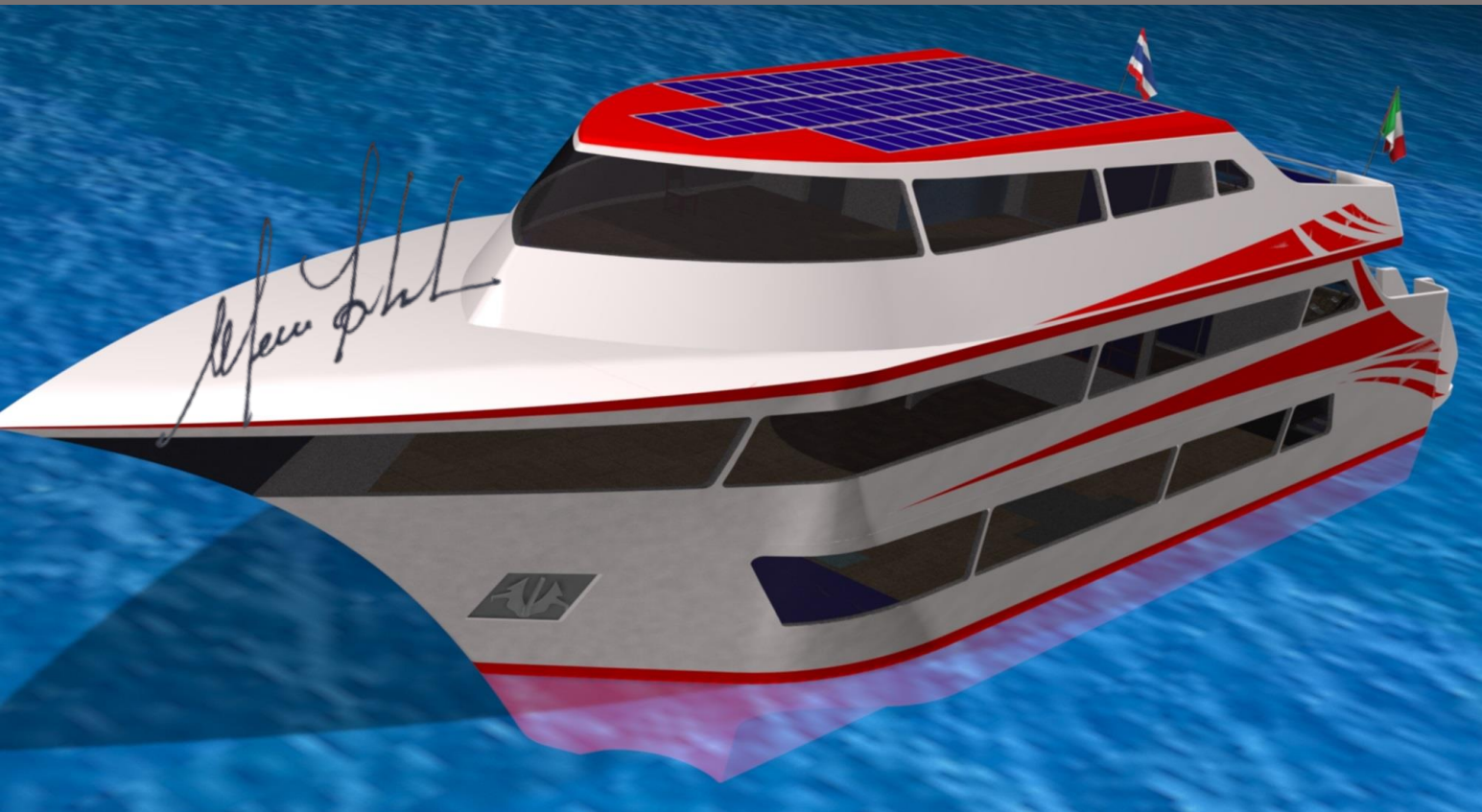
## Overview





# FZ1-35SL

## Overview



# FZ1-35SL

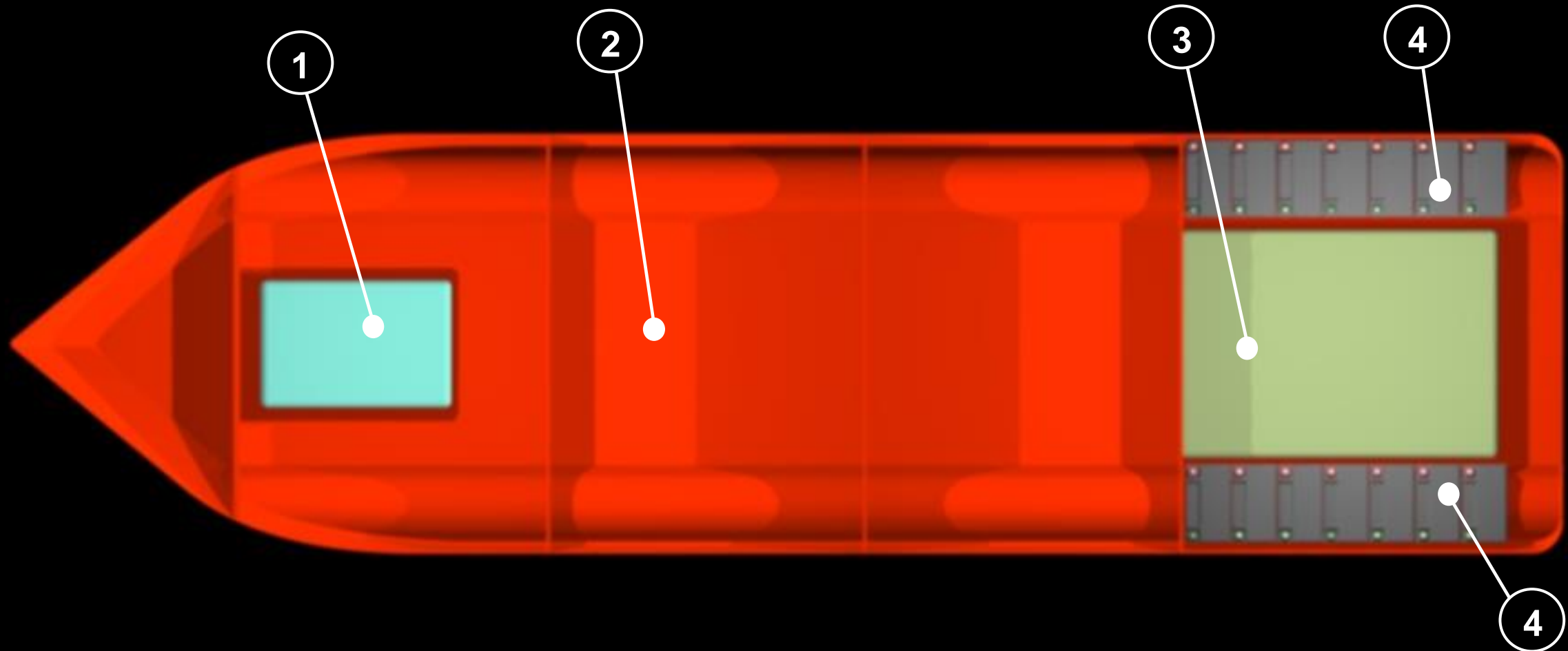
## *Project Data*

<b>Body Type:</b>	<b>Motor Yacht Cruiser</b>
<b>Beam:</b>	<b>35.158 meters</b>
<b>Draft:</b>	<b>7.5 meters</b>
<b>Buoyancy Depth:</b>	<b>2.5 meters</b>
<b>Cabins:</b>	<b>5</b>
<b>Suite:</b>	<b>1</b>
<b>Guests:</b>	<b>10</b>
<b>Crew:</b>	<b>4</b>
<b>Cruising Speed:</b>	<b>30 Knots</b>
<b>Top Speed:</b>	<b>34 Knots</b>
<b>Range:</b>	<b>700 Nm @ 27 Knots</b>
<b>Fuel Capacity:</b>	<b>21,266 Liters</b>
<b>Fresh Water Capacity:</b>	<b>7,000 Liters</b>
<b>Displacement:</b>	<b>74,500 Kg. (Full Load)</b>
<b>Main Materials:</b>	<b>Carbon Fiber / Fiberglass / Aluminum</b>
<b>Engine Model:</b>	<b>MTU 16V 2,000 M86</b> <b>Rated Output 1,630 KW</b> <b>Max Rated Speed 2,450 rpm</b> <b>Emission Compliance with Directive 2013/53/E, EPA Tier 3</b>
<b>Engine Qty:</b>	<b>2</b>



# FZ1-35SL

## *Layout Hull*



- 1- Fresh Water Tank
- 2- Hull
- 3- Fuel Tank
- 4- Battery Pack

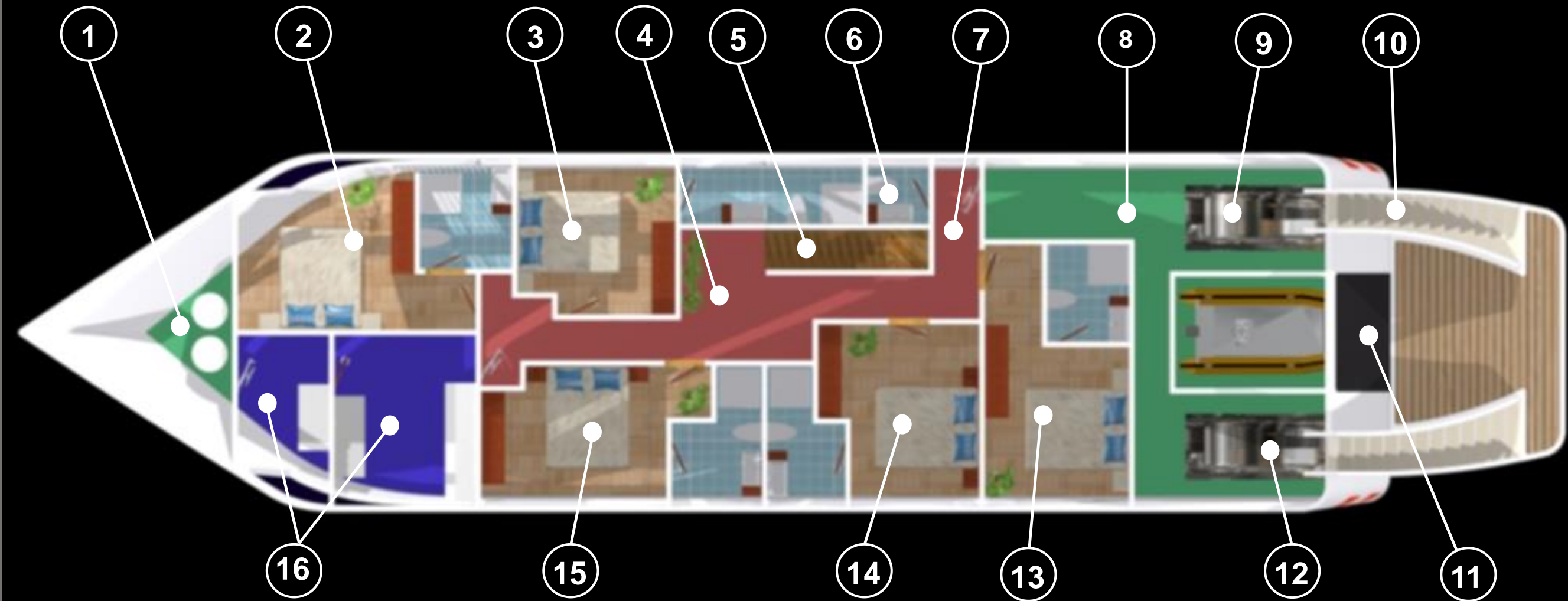
-The Hull harbors the fresh water tank, the fuel tank and the battery packs.

-The geometry of the hull has studied to allow the stability in every conditions with reduction of the roll's effects and navigation even in shallow waters.

-FZ1-35SL has studied to allow double autonomy range compared with other similar models without increase the full load displacement, this thank to the massive use of Carbon Composite and Aluminum Alloys.

# FZ1-35SL

## Layout Deck 0



1- Technical Area for Anchors Systems

2- Guest Room 1

3- Guest Room 2

4- Emergency Meeting Point

5- Inner Stairs to Deck 1

6- Staff Service Toilet

7- Technical Area

9- Tender Box

10- External Stairs to Deck 1

11- Box Tender Door

12- Engine 2

13- Staff Room

14- Guest Room 3

15- Guest Room 4

# FZ1-35SL

## Layout Deck 1



1- Front Window

2- Restaurant Area

3- TV Area

4- Service Toilet

5- External Stairs to Deck 2

6- Inner Stairs to Deck 0

7- Panoramic Area

8- Platform and Stairs to Deck 1

9- Hospitality Area

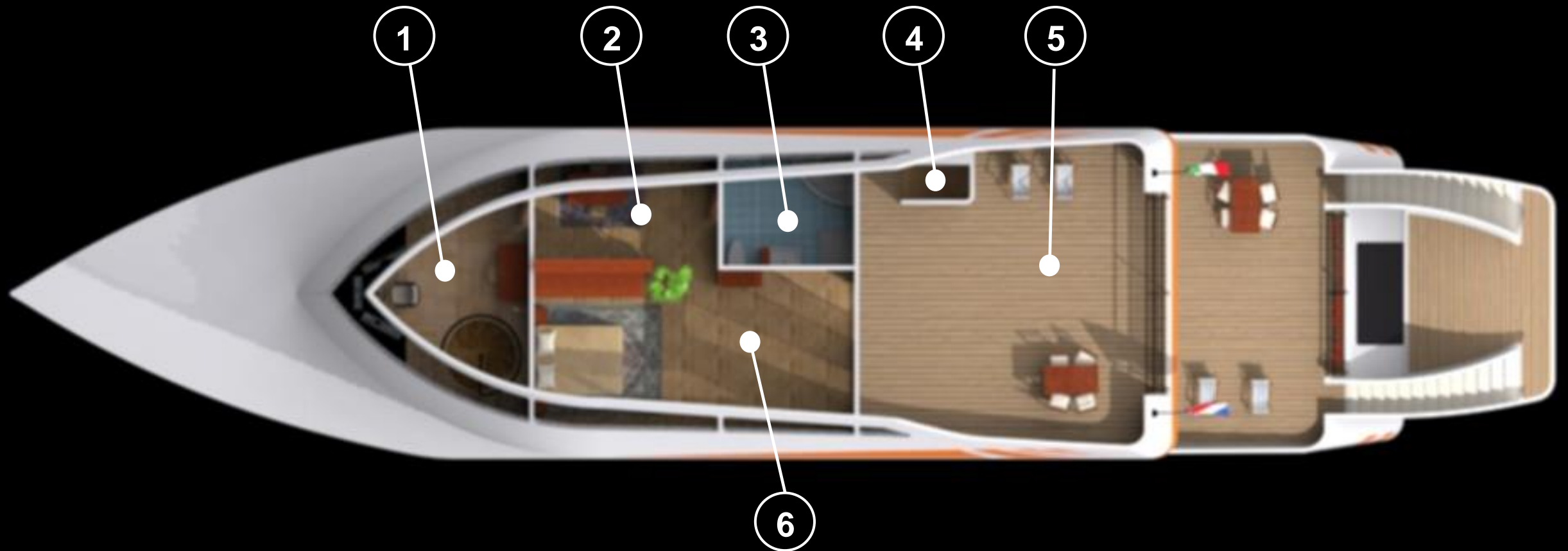
10- Reading Area

11- Relaxing Area

12- Inner Stairs to Cruise Control Room- Deck 2

# FZ1-35SL

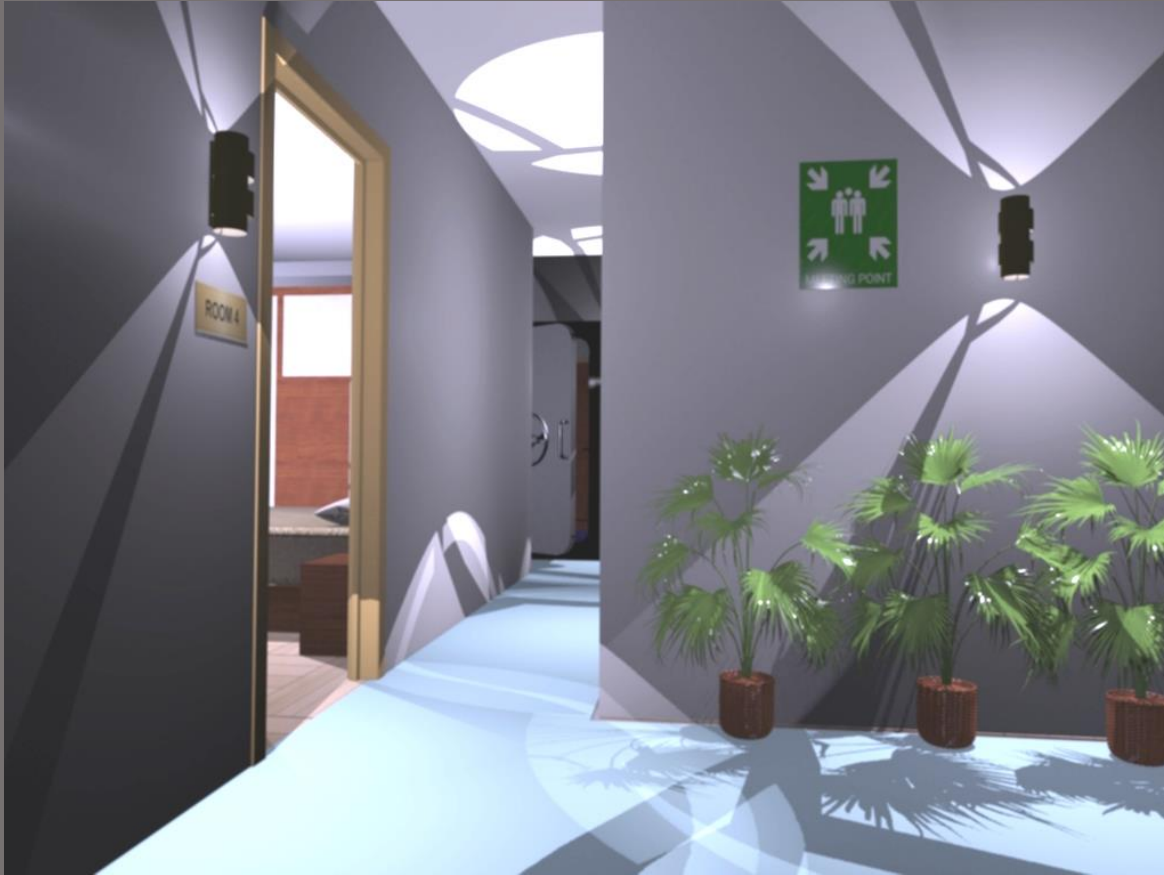
## *Layout Deck 2*



- 1- Cruise Control Room
- 2- Office Suite
- 3- Bathroom Suite with Jacuzzi
- 4- External Stairs to Deck 1
- 5- Panoramic Area
- 6- Suite Bedroom



# FZ1-35SL – Inside Deck 0



# FZ1-35SL – *Inside Deck 1*



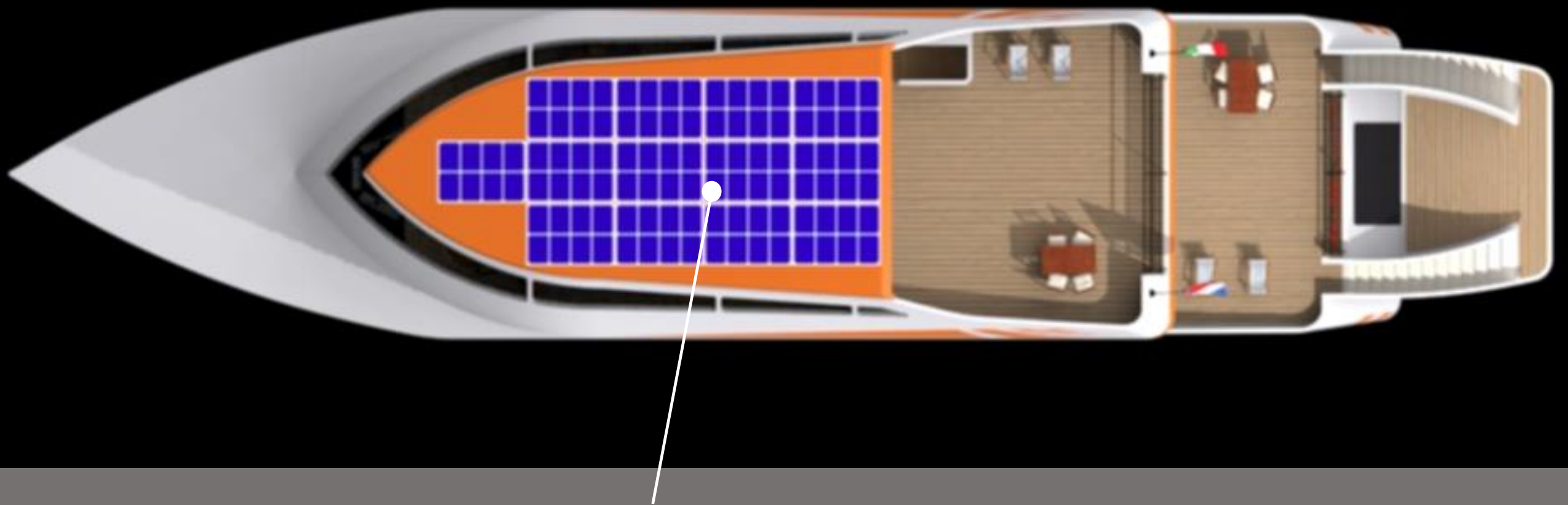


# FZ1-35SL – *Inside Deck 2*



# FZ1-35SL

*View from the top*



The Roof houses 37 meters square of Solar Panels to optimize the energy and use all the facilities of the yacht during the stop at anchor.



# FZ1-35SL

***MOGT Engineering***

***www.mogt-engineering.com***  
***ceo@mogt-engineering.com***

